

PARTS LIST FOR
2703 SERIES
PORTABLE/ALUMINUM
GASOLINE DRIVEN/ DIRECT DRIVE
COLD WATER PRESSURE WASHER

ENGINE OIL GRADE:	SAE10W-30
ENGINE OIL CAPACITY:	20 oz.
PUMP OIL GRADE:	PUMP OIL #AW-4085-0016
PUMP OIL CAPACITY:	GENERAL 14 oz. AR 16.9 oz.
NOZZLE SIZE:	3.0

This Parts Listing has been compiled for your benefit. You can be assured your new Cold Water Pressure Washer was constructed and designed with quality and performance in mind using over 25 years experience in the pressure washer business. Each component has been rigorously tested to insure the highest level of acceptance.

The contents of this Parts Listing are based on the latest product information available at the time of publication. The manufacturer reserves the right to make changes in price, color, materials, equipment, specifications or models at any time without notice.

WARNING

THIS IS A PROFESSIONAL HIGH PRESSURE, COLD WATER PRESSURE WASHER. CAUTION SHOULD BE OBSERVED WHEN USING OR REPAIRING THIS UNIT! READ AND FOLLOW THE SAFETY WARNINGS LISTED BELOW BEFORE ATTEMPTING ANY REPAIRS ON THIS PRESSURE WASHER!

SAFETY WARNINGS

1. NEVER alter or modify the equipment. Be sure any accessory items and system components being used will withstand the pressure developed. Use only genuine manufactured parts for repair of your pressure washer. Failure to do so can cause hazardous operating conditions and will VOID warranty.
2. NEVER make adjustments on machinery while the unit is connected to the engine without first removing the ignition cable from the spark plug. Turning over the machinery by hand during adjustment or cleaning might start the engine and machinery with it, causing serious injury to the operator.
3. Know how to stop and bleed pressures quickly. Be thoroughly familiar with controls.
4. Before servicing the unit, turn unit off, relieve the water pressure and allow the unit to cool down. Do not make repairs while the unit is running. Service in a clean, dry, flat area. Block the wheels to prevent the unit from moving. Be especially careful to properly dispose of any flammable materials.
5. After testing the machine, DO NOT leave the pressurized unit unattended. Shut off the unit and release trapped pressure before leaving.

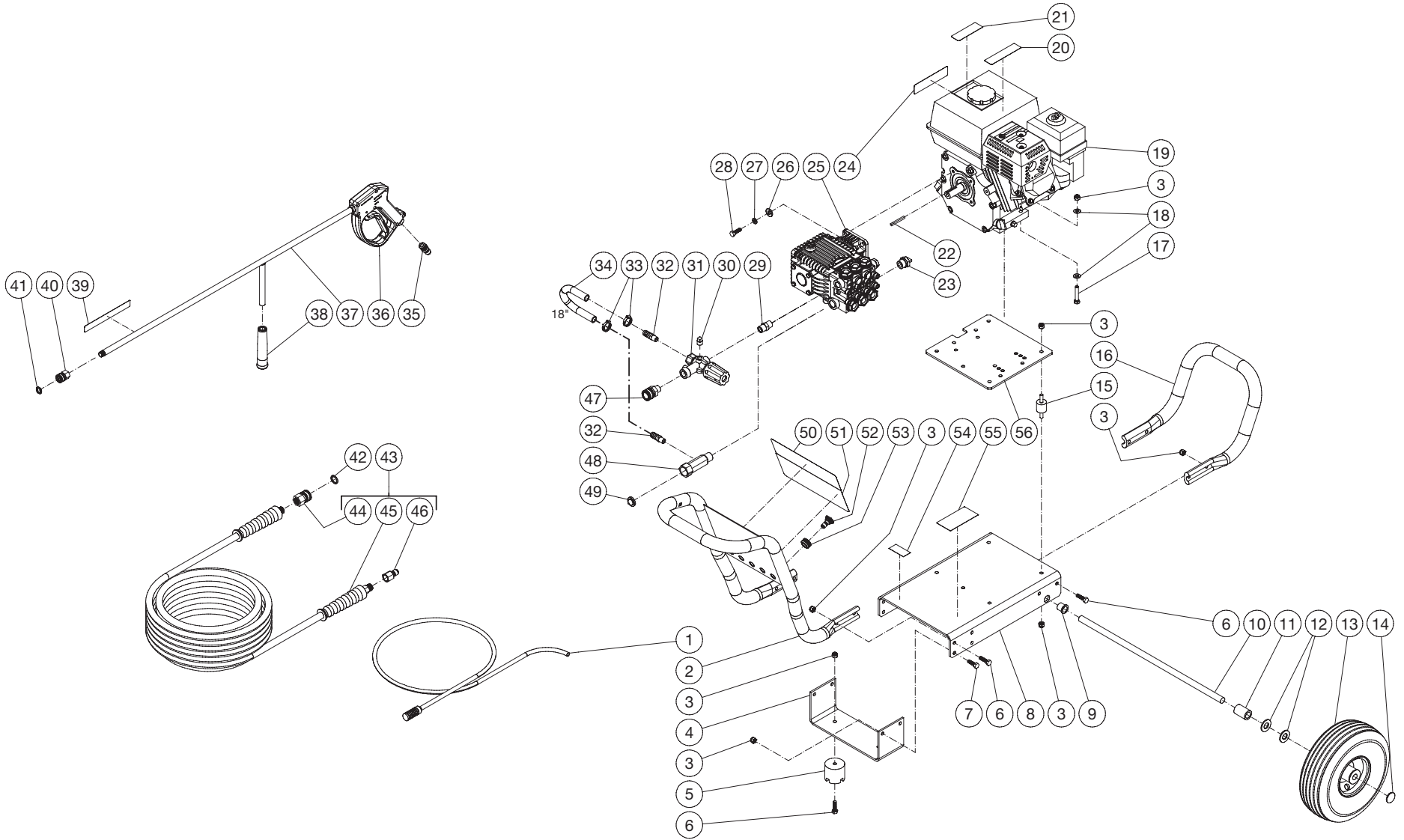
Table of Contents

SPECIFICATIONS.....	3
FRAME ASSEMBLY	4
PUMP ASSEMBLY (3-0407)	6
PUMP ASSEMBLY (3-0428)	8
UNLOADER ASSEMBLY (8-0361)	10

SPECIFICATIONS

Operating Pressure (PSI/Bar):	2700/186	
High Pressure Nozzle:	3.0	
Water Volume (GPM/lpm):	2.4/9	
Engine:	Honda	
Model	GX200	
Engine Type	4 Stroke, Overhead Valve, Single Cylinder	
Oil Type	SAE10W-30	
Oil Capacity (oz./liters)	20/.6	
Low Oil Protection	Oil Alert™	
Fuel Type	Unleaded Gasoline 86 Octane Minimum	
Fuel Capacity (gallon/ liters)	.95/3.6	
Starting	Recoil	
Maximum No Load RPM	3600 (+/- 100) RPM	
Pump:	Direct Driven, Oil Bath, Triplex Piston	
Oil Type	Pump Oil #AW-4085-0016	
Oil Capacity (oz./liters)	14/.41	16.9/.49
Plungers	Ceramic	
Manifold	Forged Brass	
Valves	Stainless Steel	
Unloader	Adjustable	
Thermal Relief Valve	Relieves heated water during unloader bypass stage	
Unit Net Weight (lbs/Kg)	82 / 37.19	74 / 33.57
Unit Shipping Weight (lbs/Kg)	104.55 / 47.42	96.55 / 43.79
Unit Net Dimension (in/cm)	39Lx20.5Wx24.5H/99Lx52Wx62H	

FRAME ASSEMBLY

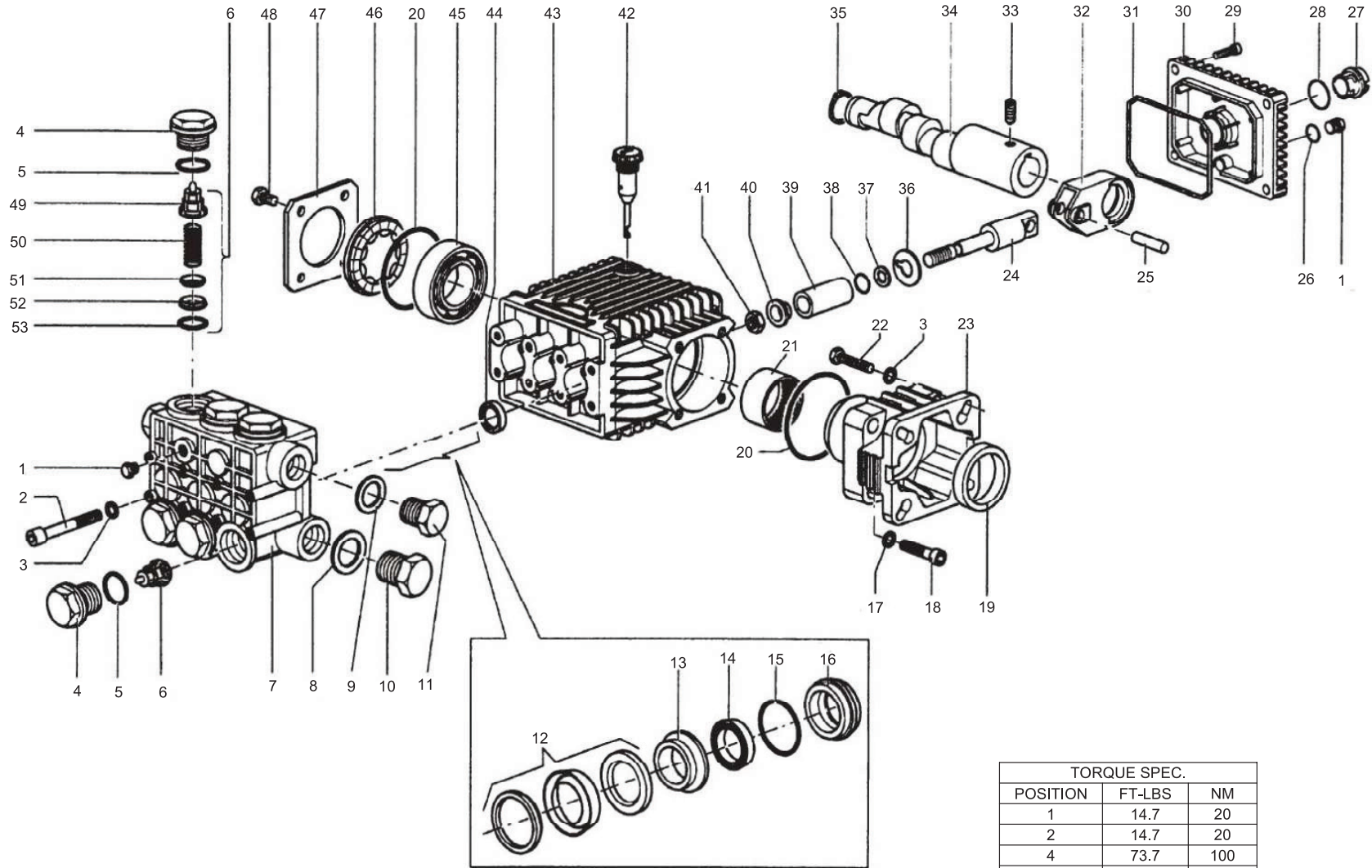


DC-2703-A0H6G_M 052417 JJR

FRAME ASSEMBLY

ITEM	TITLE	PART #	QTY	ITEM	TITLE	PART #	QTY
1	DETERGENT HOSE	19-0233	1	31	UNLOADER	8-0361	1
2	HANDLE	7-0182	1	32	HOSE BARB	23-0120	2
3	LOCKNUT	30-0157	27	33	HOSE CLAMP	42-0011	2
4	BRACKET	56-0054	1	34	HOSE *(TWO FEET REQUIRED)	15-0007	1
5	ISOLATOR	14-0008	2	35	QUICK CONNECT	17-0005	1
6	BOLT	27-0068	10	36	GUN	16-0483	1
7	BOLT	27-0067	4	37	WAND (INCLUDES GRIP & QUICK CONNECT)	16-0418	1
8	BASEPLATE	5-0206	1	38	GRIP	7-0002	1
9	BUSHING	62-0175	2	39	DECAL - RISK OF INJECTION (SEE 71-0065)	N/A	1
10	AXLE	20-0518	1	40	QUICK CONNECT	17-0001	1
11	SPACER	62-0176	2	41	O-RING	25-0122	1
12	WASHER	28-0008	4	42	O-RING	25-0123	2
13	WHEEL	14-0130	2	43	PRESSURE HOSE ASSEMBLY	851-0338	1
14	CAP	33-0018	2	44	QC SOCKET	17-0004	1
15	ISOLATOR	14-0096	4	45	HOSE	15-0209	1
16	HANDLE	7-0183	1	46	QUICK CONNECT	17-0006	1
17	BOLT	27-0070	4	47	QUICK CONNECT SOCKET	17-0007	1
18	WASHER	28-0003	8	48	INLET FITTING	23-0516	1
19	ENGINE - HONDA	1-0088	1	49	FILTER	19-0001	1
20	DECAL - RISK OF BURNS (SEE 71-0065)	N/A	1	50	DECAL - PLACARD SEE DX OPTION	N/A	1
21	DECAL - RISK OF FIRE (SEE 71-0065)	N/A	1	51	DECAL - WARNING/CAUTION/OPERATION (SEE 71-0065)	N/A	1
22	KEY	43-0073	1	52	NOZZLE	18-0387	1
23	RELIEF VALVE	22-0005	1	-	NOZZLE 15°	18-0388	1
24	DECAL - 2700 PSI	34-3467	1	-	NOZZLE 25°	18-0390	1
25	PUMP (GENERAL)	3-0407	1	-	NOZZLE	18-0391	1
-	PUMP (Mi-T-M)	3-0428	1	53	GROMMET	33-0001	5
26	WASHER	28-0022	4	54	DECAL - MADE IN USA	34-3553	1
27	LOCKWASHER	29-0007	4	55	DECAL- SILVER STICKER	N/A	1
28	BOLT	27-0092	4	56	ISOLATION PLATE	56-0052	1
29	NIPPLE	24-0010	1	-		71-0065	1
30	PLUG	23-0238	1	*MUST ORDER IN ONE FOOT LENGTHS			

PUMP ASSEMBLY (3-0407)



TORQUE SPEC.		
POSITION	FT-LBS	NM
1	14.7	20
2	14.7	20
4	73.7	100
10	29.4	40
11	29.4	40
18	7.3	10
22	14.7	20
29	7.3	10
41	11.0	15
48	7.3	10

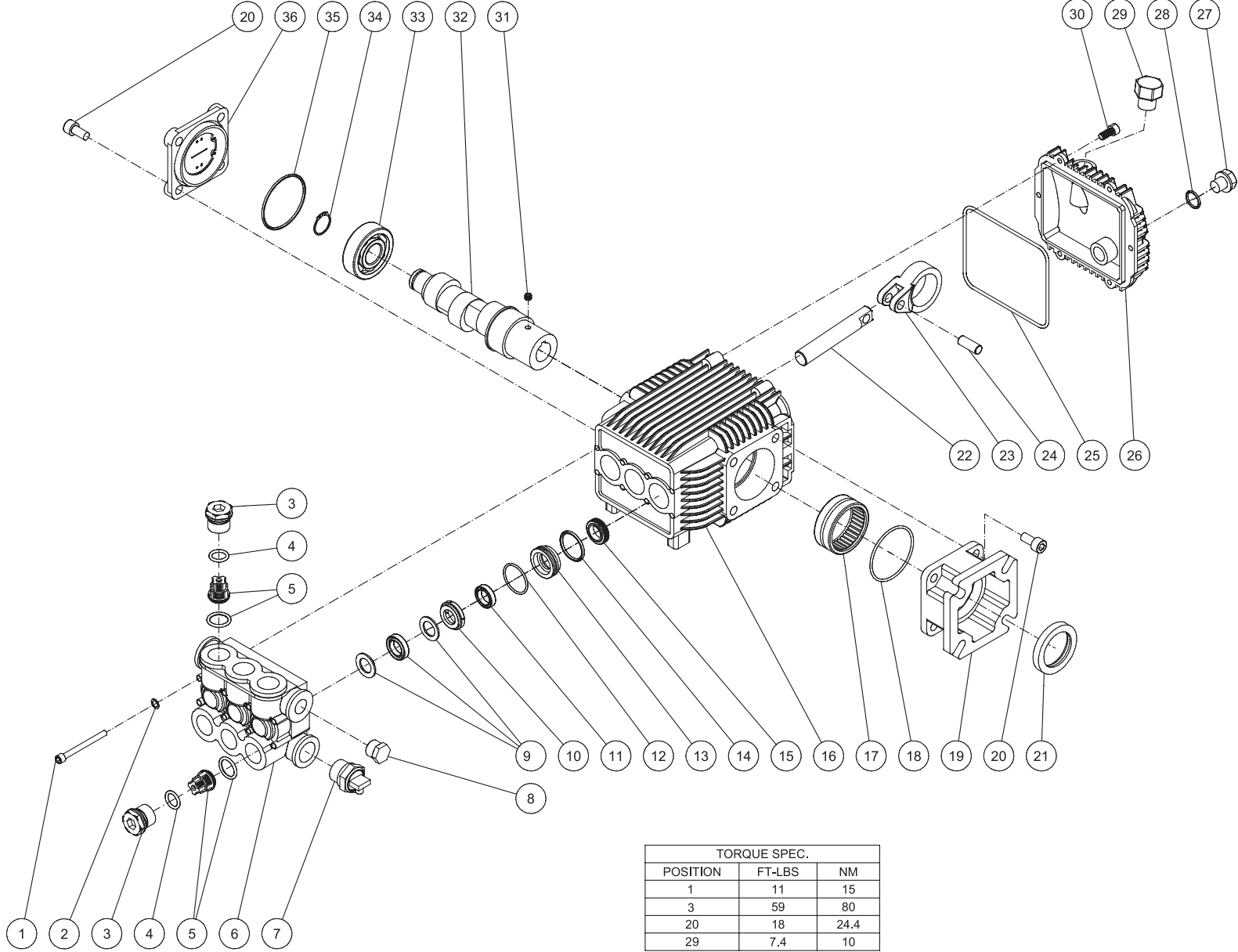
PUMP ASSEMBLY

ITEM	DESCRIPTION	PART #	QTY	ITEM	DESCRIPTION	PART #	QTY
1	PLUG	39-0017	2	27	O-RING	25-0059	1
2	BOLT	27-9576	8	28	BOLT	27-8401	4
3	LOCKWASHER	29-1014	8	29	CRANKCASE COVER	46-1164	1
4	VALVE PLUG (SEE KIT 70-0668)	39-0071	6	30	O-RING	25-0317	1
5	O-RING (SEE KIT 70-0668)	25-0012	6	31	CONNECTING ROD	46-1160	3
6	VALVE ASSEMBLY (SEE KIT 70-0028)	SEE KIT	6	32	SCREW	27-8886	1
7	MANIFOLD	N/A	1	33	CRANKSHAFT	N/A	1
8	WASHER	28-1038	1	34	SNAP RING	46-0104	1
9	WASHER	28-1002	1	35	SLINGER WASHER	28-1049	3
10	PLUG	39-0019	1	36	ANTI-EXTRUSION RING	25-0143	3
11	PLUG	39-0018	1	37	O-RING	N/A	3
12	PACKING ASSY (SEE KIT 70-0669 OR 70-0415)	SEE KIT	3	38	PISTON	46-0228	3
13	INTERNAL RING (SEE KIT 70-0415)	SEE KIT	3	39	WASHER GASKET	46-1231	3
14	LOW PRESSURE SEAL (SEE KIT 70-0669 OR 70-0415)	SEE KIT	3	40	NUT	30-0058	3
15	O-RING (SEE KIT 70-0415)	SEE KIT	3	41	DIPSTICK	46-0143	1
16	SEAL RETAINER (SEE KIT 70-0415)	SEE KIT	3	42	CRANKCASE	46-1166	1
17	WASHER	28-0200	4	43	OIL SEAL (SEE KIT 70-0414)	N/A	3
18	BOLT	27-8404	4	44	BEARING BALL	48-0011	1
19	OIL SEAL	N/A	1	45	OIL LEVEL INDICATOR SPACER	46-0574	1
20	O-RING	25-0060	2	46	BEARING COVER	46-0084	1
21	NEEDLE BEARING	48-0040	1	47	BOLT	27-8000	8
22	FLANGE	N/A	1	48	VALVE CAGE	N/A	6
23	PLUNGER GUIDE	46-1165	3	49	SPRING	N/A	6
24	PIN	46-1162	3	50	VALVE PLATE	N/A	6
25	O-RING	25-0210	1	51	VALVE SEAT	N/A	6
26	SIGHT GLASS	46-1163	1	52	O-RING	25-0053	6

REPLACEMENT KITS

KIT #	DESCRIPTION	ITEMS	# OF ASSEMBLIES	# OF CYLINDERS
70-0028	KITS - VALVE	6	6	3
70-0668	KIT - VALVE PLUG	4,5	6	3
70-0414	KIT - OIL SEAL	43	3	3
70-0669	KIT - PACKING SEALS	12,14	3	3
70-0415	KIT - PACKING W/BRASS 15MM	12,13,14,15,16	1	1

PUMP ASSEMBLY (3-0428)



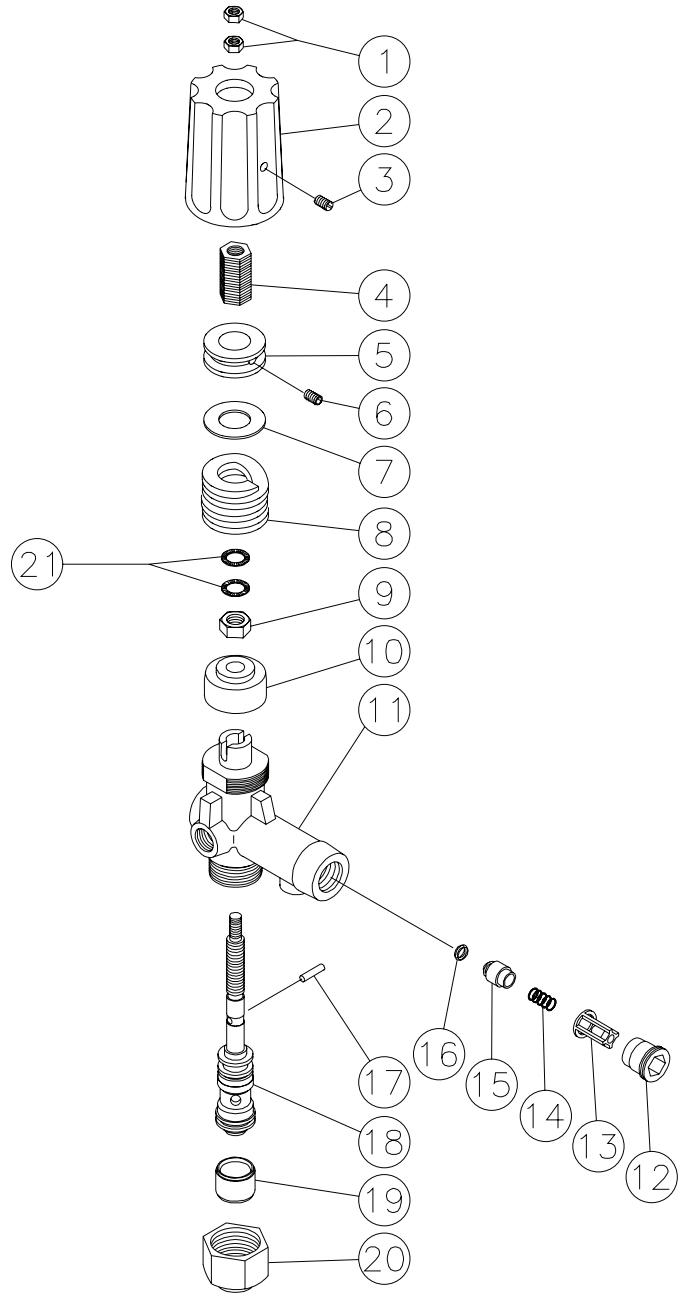
TORQUE SPEC.		
POSITION	FT-LBS	NM
1	11	15
3	59	80
20	18	24.4
29	7.4	10

3-0428 120115

3-0428 120115 JDK			
PUMP ASSEMBLY			
ITEM	DESCRIPTION	PART #	QTY
1	BOLT	27-0898	8
2	WASHER	28-0203	8
3	VALVE PLUG	39-0231	6
4	O-RING	25-0622	6
5	VALVE ASSEMBLY (SEE KIT 70-0502)	70-0502	6
6	MANIFOLD HEAD	46-1503	1
7	RELIEF VALVE	22-0005	1
8	PLUG	39-0102	1
9	HIGH PRESSURE PACKING (SEE KIT 70-0501)	SEE KIT	3
10	SEAL COMPACTION RING	46-1311	3
11	LOW PRESSURE SEAL (SEE KIT 70-0501)	SEE KIT	3
12	O-RING (SEE KIT 70-0501)	SEE KIT	3
13	RETAINER RING	46-1312	3
14	O-RING	25-0663	3
15	OIL SEAL	46-1313	3
16	CRANKCASE	N/A	1
17	NEEDLE BEARING	48-0096	1
18	O-RING	25-0603	1
19	FLANGE	46-1314	1
20	BOLT	27-8431	8
21	OIL SEAL	26-0320	1
22	PISTON - COATED	46-1504	3
23	CONNECTING ROD	46-1595	3
24	PISTON - PIN	46-1505	3
25	O-RING	25-0604	1
26	CRANKCASE COVER	46-1594	1
27	DRAIN PLUG	39-0376	1
28	O-RING	25-0606	1
29	OIL CAP	46-1593	1
30	BOLT	27-8401	6
31	SET SCREW	27-8886	1
32	CRANKSHAFT	N/A	1
33	BALL BEARING	48-0102	1
34	SNAP RING	46-1596	1
35	O-RING	25-0634	1
36	SIGHT GLASS ASSEMBLY	46-1597	1

REPLACEMENT KITS				
KIT #	DESCRIPTION	ITEMS	# OF ASSEMBLIES	# OF CYLINDERS
70-0501	KITS - PACKINGS	9, 11, 12	3, 3, 3	3
70-0502	KITS - VALVES W/ O-RING	5	6	3

UNLOADER ASSEMBLY (8-0361)



UNLOADER (850-0252)			
REF. #	DESCRIPTION	PART #	QTY.
1	Hex Nut	8-0362	2
2	Cover	7-0098	1
3	Set Screw	27-4280	1
4	Adjusting Insert- Brass	8-0363	1
5	Adjustment Nut	8-0364	1
6	Set Screw	8-0365	1
7	Glide Ring	8-0366	1
8	Spring	49-0104	1
9	Hex Nut	8-0367	1
10	Bushing	8-0368	1
11	Unloader Body	8-0369	1
12	Retainer	8-0269	1
13	Valve Housing	8-0104	1
14	Spring	49-0023	1
15	Valve	8-0105	1
16	O-ring	25-0036	1
17	Cylinder Pin	8-0372	1
18	Piston Repair Kit	70-0243	1
19	Spacer	8-0371	1
20	Stop Nut	8-0157	1
21	Washer	29-0154	2
	Check Valve Repair Kit (Includes 13-16)	70-0244	
	Unloader Complete	850-0252	

