

PARTS LIST FOR
2503/3004 SERIES
STATIONARY
ELECTRIC DRIVEN/BELT DRIVE
ELECTRIC HEATED
HOT WATER PRESSURE WASHER
HOT WATER PRESSURE WASHER

PUMP OIL GRADE:	SAE30W Non-Detergent
PUMP OIL CAPACITY:	41 oz.
HEAT EXCHANGE RATING:	
	2503: 48kW
	3004: 72kW
Pressure Nozzle:	
	2503: 3.5
	3004: 4.5

This Parts Listing has been compiled for your benefit. You can be assured your hot water pressure washer was constructed and designed with quality and performance in mind. Each component has been rigorously tested to insure the highest level of acceptance.

The contents of this Parts Listing are based on the latest product information available at the time of publication. The manufacturer reserves the right to make changes in price, color, materials, equipment, specifications or models at any time without notice.

WARNING

THIS IS A PROFESSIONAL HIGH PRESSURE, HOT WATER PRESSURE WASHER. CAUTION SHOULD BE OBSERVED WHEN INSTALLING, USING OR REPAIRING THIS UNIT! READ AND FOLLOW THE SAFETY WARNINGS BEFORE ATTEMPTING ANY REPAIRS ON THIS PRESSURE WASHER!

SAFETY WARNINGS

1. NEVER alter or modify the equipment. Use only genuine manufacturer parts for repair of your pressure washer. Failure to do so can cause hazardous operating conditions and will VOID warranty. Repairs performed on this pressure washer should be done by a qualified serviceman in accordance with local, state and national regulations.
2. This unit has multiple safety devices which should never be altered, modified, removed or made inoperable. If a device fails, replace immediately with only genuine manufacturer replacement parts.
3. Electrical System:
The unit must be connected to a properly grounded electrical source which provides the correct voltage and adequate fuse protection. Disconnect from power source when making repairs. Never assume the pressure washer is safe to work on just because it is not operating. It could restart at any time.
Never operate pressure washer with electrical enclosures open, removed or damaged. Do not allow metal components of the pressure washer to come in contact with live electrical components.
4. Do not operate the unit without all protective covers in place. Before servicing the unit, always shut off the unit and trigger the gun to release trapped pressure. Know how to stop the pressure washer and bleed pressures quickly. Be thoroughly familiar with controls. Be sure any accessory items and system components being used will withstand the pressure developed.

NOTES

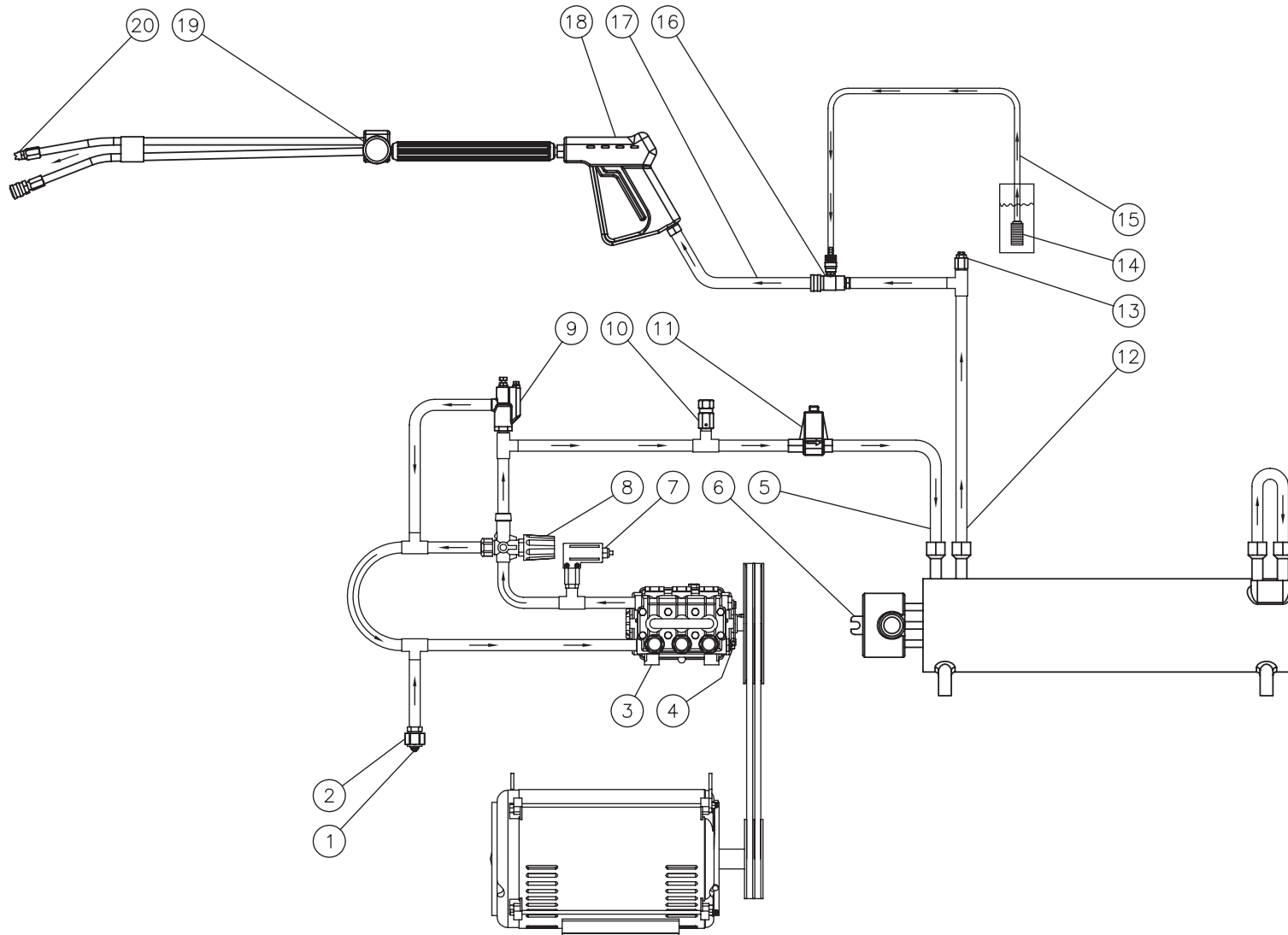
Table of Contents

NOTES	3
SPECIFICATIONS.....	5
FLOW CHART	6
GENERAL THEORY OF OPERATION	7
UNIT ASSEMBLY.....	8
UNIT ELECTRIC BOX ASSEMBLY	10
INLET PLUMBING ASSEMBLY	12
OUTLET PLUMBING ASSEMBLY	14
3 CARTRIDGE PLUMBING	16
2 CARTRIDGE PLUMBING	18
CW UNIT ASSEMBLY.....	20
CW ELECTRIC BOX ASSEMBLY	22
PUMP (3-0202 AND 3-0203).....	24
GUN / WAND / HOSE ASSEMBLY	26
DUAL LANCE ASSEMBLY.....	28
2503 HEATER WIRE SCHEMATIC	30
2503 HEATER WIRE DIAGRAM	31
3004 HEATER WIRE SCHEMATIC	32
3004 HEATER WIRE DIAGRAM	33
2503_3004 CW UNIT WIRE SCHEMATIC.....	34
2503_3004 CW UNIT WIRE DIAGRAM.....	35

SPECIFICATIONS

Operating Pressure (PSI/Bar):	2500/5.36	3000/6.43
High Pressure Nozzle:	3.5	4.5
Water Volume (GPM/lpm):	2.8/10.6	3.9/14.8
Motor:	TEFC	
Horsepower	6	8
Voltage	460	
RPM	1725	
Phase	3	
Amps	7.5	10
Pump:	Belt Driven, Oil Bath, Triplex Piston	
Oil Type	SAE30W Non-Detergent	
Oil Capacity (oz./liters)	41/1.21	
Plungers	Ceramic	
Manifold	Forged Brass	
Valves	Stainless Steel	
Unloader	Pre-set at the factory	
Thermal Relief Valve	Relieves heated water during unloader bypass stage	
Detergent Injector	Adjustable low pressure down stream from pump	
Heat Exchanger:		
Voltage	480	
Phase	3	
Amps	60	90
Rating	48kW	72kW
Electric Controls:		
Heat Exchanger	Rocker Switch	
Control Voltage	24 Volt AC	
Safety Devices:		
Thermostat	Adjustable	
Relief Valve	Relieves Excessive System Pressure	
Unit Net Weight (Lbs/kg):	624/284	725/329
Unit Shipping Weight (Lbs/kg):	725/329	826/375
Unit Net Dimension (In/cm):	39.5Lx25Wx49.25H / 100.33Lx63.45Wx125.01H	
Unit Shipping Dimension (In/cm):	57.13Lx35.75Wx51.13H / 145.11Lx90.81Wx129.87H	

FLOW CHART



GENERAL THEORY OF OPERATION

WATER FLOW: Connect a pressurized water source to the INLET GARDEN HOSE CONNECTION (2) and turn on the water supply. The water will flow through a WATER STRAINER (1) and into the TRIPLE HIGH PRESSURE PUMP (3) which has an UNLOADER (8) that bypasses the water when the trigger gun is closed. To protect the pump from heated water during this bypass stage, a HEAT DUMP VALVE (4) will open at 125°F/52°C allowing the heated water to escape. The heat dump valve automatically resets when the water cools. Attached to the pump is a PRESSURE SWITCH (7) that controls the time-delay shutdown feature.

After the high pressure water exits the pump, it enters a safety system which protects the operator from danger. The safety system contains a FLOW SWITCH (11) which must signal that water is flowing before it allows the heaters to turn on. From there, the water flows through the HEAT EXCHANGER INLET (5) where it is heated when the heat exchanger switches are on. As the water exits the HEAT EXCHANGER OUTLET (12), it passes an ADJUSTABLE THERMOSTAT (13) which senses the water temperature and shuts off the heat exchangers if the water gets too hot.

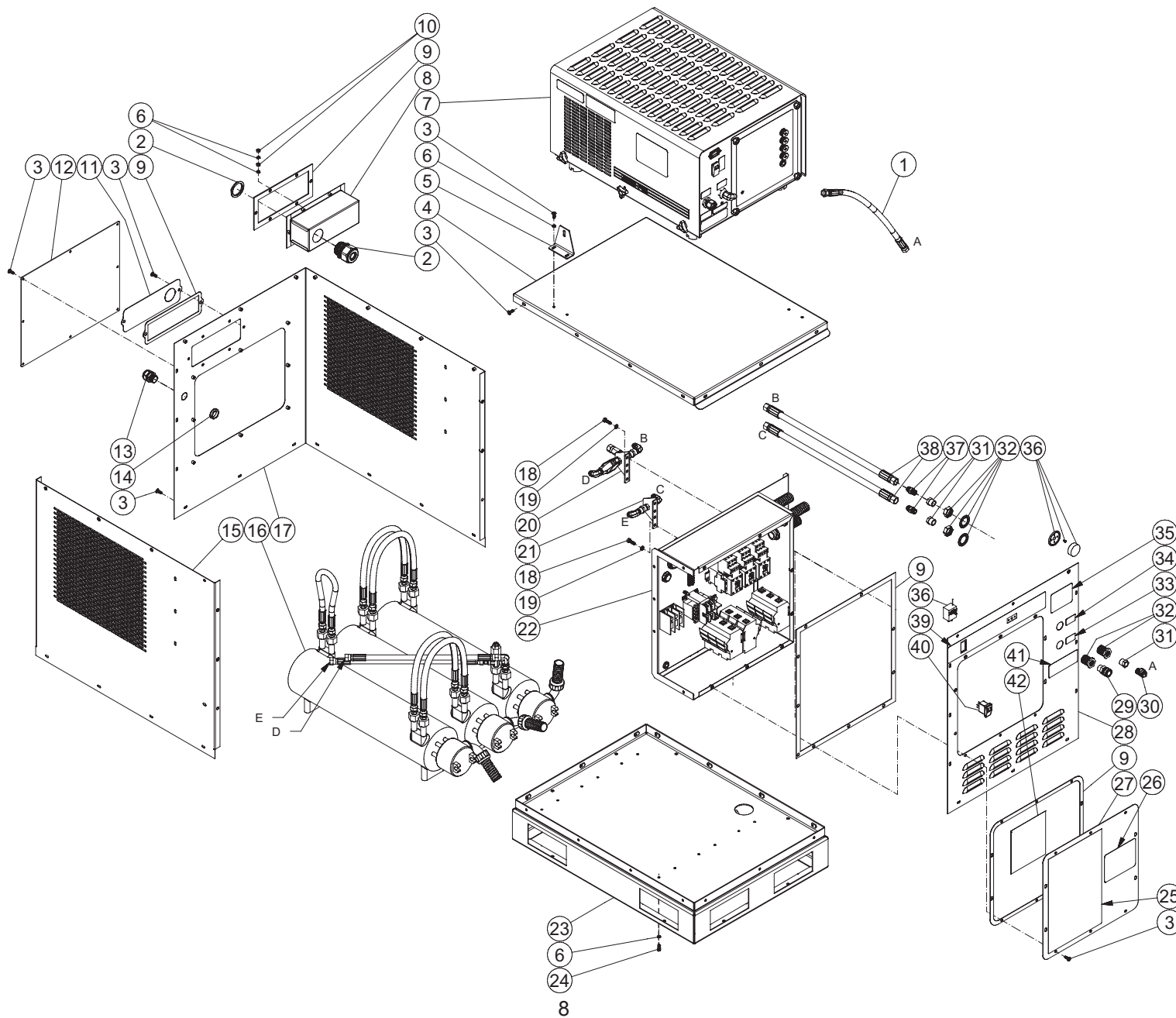
If the unloader fails to bypass water, or the heat exchanger remains on when the trigger gun is closed, the SAFETY RELIEF VALVE (10) will relieve and allow water to exit safely.

During normal operation, the trapped pressure in bypass mode may be lowered by the PRESSURE REGULATING VALVE (9), which will relieve a small amount of water into the bypass loop. This will lower the trapped pressure between the unloader and gun.

The heated water then flows through the HIGH PRESSURE HOSE (17) and to the TRIGGER GUN ASSEMBLY (18) which allows the operator to control the water supply. When the trigger gun is open, the water flows through the ADJUSTABLE PRESSURE DUAL LANCE (19) and exits the NOZZLES (20).

DETERGENT: When using detergents, the solution passes through the DETERGENT STRAINER (14) located on the DETERGENT HOSE (15). The detergent solution then travels through the DETERGENT METERING VALVE (16) and into the high pressure hose.

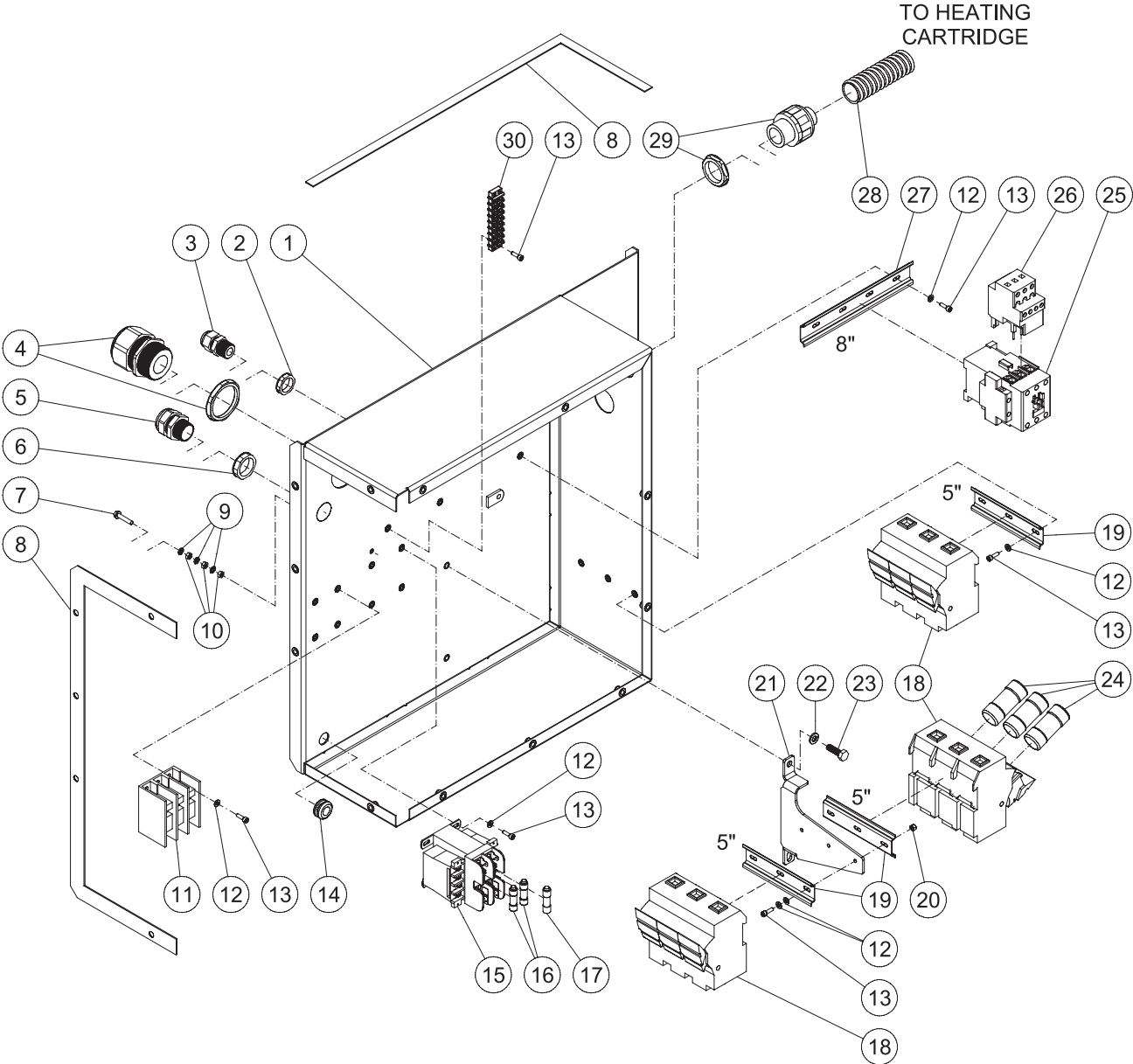
UNIT ASSEMBLY



UNIT ASSEMBLY			
ITEM	DESCRIPTION	PART #	QTY
1	20" HP HOSE	15-0368	1
2	CORD GRIP	32-1201	1
3	BUTTON SCREW	27-3047	72
4	CAP PLATE	20-1483A18	1
5	BRACKET - CW MOUNT	20-1482A18	2
6	LOCKWASHER	29-0006	18
7	HAE PRESSURE UNIT ASSY	HAE PRESSURE UNIT ASSY	1
8	JUNCTION BOX	20-1461A18	1
9	GASKET SET	26-0405	1
10	NUT	30-0002	2
11	COVER PLATE	20-1462A18	1
12	PANEL - BACK	20-1458A18	1
13	CORD RELIEF	9-0046	1
14	ELECTRICAL LOCKNUT	32-0292	1
15	SECONDARY BODY PANEL	20-1454A18	1
16	3004 CARTRIDGE PLUMBING	3004 CARTRIDGE PLUMBING	1
-	2503 CARTRIDGE PLUMBING	2503 CARTRIDGE PLUMBING	1
17	PRIMARY BODY PANEL	20-1453A18	1
18	BOLT	27-0067	4
19	LOCKWASHER	29-0007	4
20	INLET PLUMBING ASSY	INLET PLUMBING ASSY	1
21	OUTLET PLUMBING ASSY	OUTLET PLUMBING ASSY	1
22	ELEC BOX ASSY	ELEC BOX ASSY	1
23	BASE FRAME	20-1452A18	1
24	BOLT	27-0015	12
25	DECAL	N/A	1
26	DECAL - MI-T-M	34-2169	1
27	E-BOX COVER PANEL	20-1459A18	1
28	FRONT PANEL	20-1455A18	1
29	QUICK CONNECT SOCKET	17-0029	1
30	ELBOW	24-0092	1
31	REDUCER BUSHING	23-0016	3
32	ADAPTER	23-0365	2
33	DECAL - OUTLET	34-1475	1
34	DECAL-INLET (E/S)	34-1474	1
35	DECAL - DATA PLATE	34-1138	1
36	ADJUSTABLE THERMOSTAT	32-0962	1
37	NIPPLE	24-0002	2
38	24.5" HP HOSE	15-0254	2
39	DECAL - CONTROL PANEL	N/A	1
40	ROCKER SWITCH	32-0731	1
41	DECAL-CAUT:HOT SUR/HOT DIS E/S	N/A	1
42	PLASTIC ZIPLOCK BAG	41-0184	1
-	DECAL SET	71-3002	1

*MUST ORDER IN ONE FOOT LENGTHS

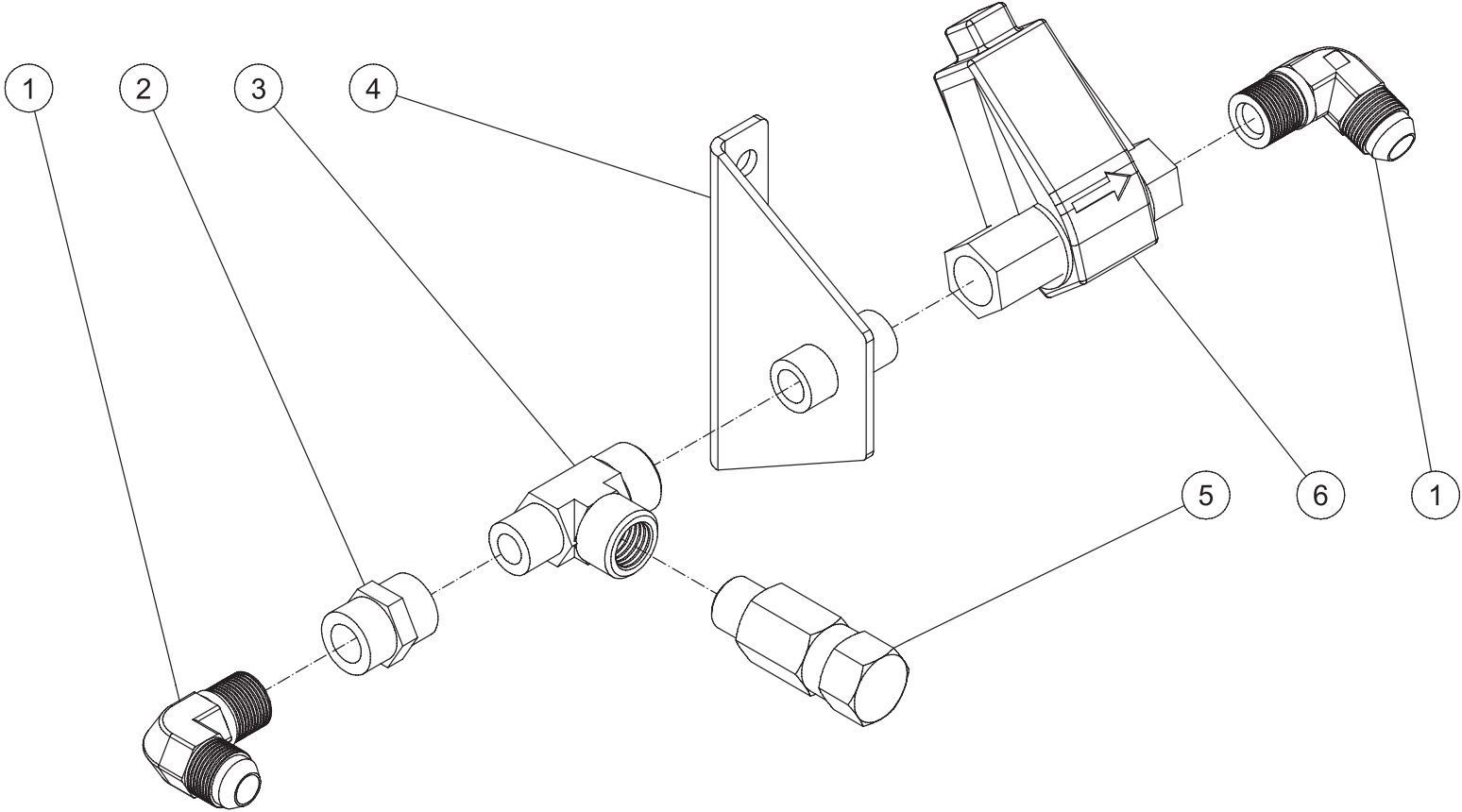
UNIT ELECTRIC BOX ASSEMBLY



GHE-2503_3004-3460 E-BOX ASSEMBLY 022916 JDK

UNIT ELECTRIC BOX ASSEMBLY			
ITEM	DESCRIPTION	PART #	QTY
1	ELECTRIC PANEL	20-1456A18	1
2	ELECTRICAL LOCKNUT	32-0108	1
3	STRAIN RELIEF	32-0437	1
4	CORD GRIP	32-1201	1
5	CORD RELIEF	9-0046	1
6	ELECTRICAL LOCKNUT	32-0292	1
7	BOLT	27-8807	1
8	GASKET SET	26-0405	1
9	STAR WASHER	28-1009	3
10	NUT	30-6001	3
11	POWER BLOCK 3-POLE	32-0905	1
12	WASHER (3004)	28-0010	19
-	WASHER (2503)	28-0010	16
13	SCREW (3004)	27-8835	18
-	SCREW (2503)	27-8835	15
14	GROMMET	33-0001	1
15	TRANSFORMER	32-0313	1
16	FUSE	32-0467	2
17	FUSE	32-1084	1
18	FUSE HOLDER (3004)	32-1199	3
-	FUSE HOLDER (2503)	32-1199	2
19	DIN RAIL *(TWO FEET REQUIRED) (3004)	32-0316	3
-	DIN RAIL *(ONE FOOT REQUIRED) (2503)	32-0316	2
20	NUT	30-3158	3
21	BRACKET - FUSE HOLDERS	20-1460A18	1
22	LOCKWASHER	29-0007	2
23	BOLT	27-0067	2
24	FUSE (3004)	32-1200	9
-	FUSE (2503)	32-1200	6
25	CONTACTOR - 30AMP (3004)	32-0597	3
-	CONTACTOR - 30AMP (2503)	32-0597	2
26	OVERLOAD (3004)	32-1074	3
-	OVERLOAD (2503)	32-1074	2
27	DIN RAIL *(ONE FOOT REQUIRED)	32-0316	1
28	CONDUIT FLEX *(EIGHT FEET REQUIRED) (3004)	32-0908	3
-	CONDUIT FLEX *(FIVE FEET REQUIRED) (2503)	32-0908	2
29	STRAIGHT CONDUIT FITTING (3004)	32-0996	3
-	STRAIGHT CONDUIT FITTING (2503)	32-0996	2
30	TERMINAL STRIP	32-0436	1
*MUST ORDER IN ONE FOOT LENGTHS			

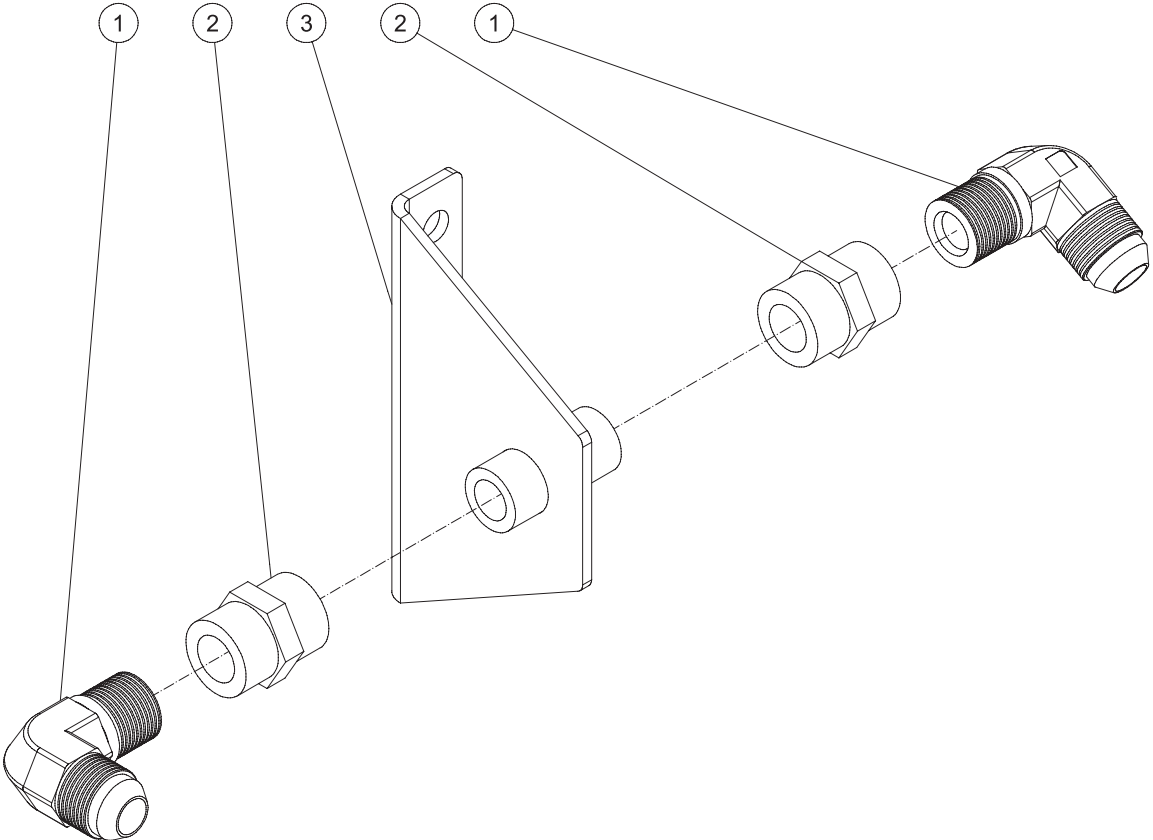
INLET PLUMBING ASSEMBLY



GHE-2503_3004-3460 INLET PLUMBING ASSEMBLY 120815 JDK

GHE-2503_3004-3460 INLET PLUMBING ASSEMBLY 120815 JDK			
INLET PLUMBING			
ITEM	DESCRIPTION	PART #	QTY
1	ELBOW	24-0092	2
2	COUPLER	23-0077	1
3	STREET TEE	23-0058	1
4	WATER OUTLET BRACKET	13-0199A18	1
5	PRESSURE RELIEF VALVE	22-0273	1
6	FLOW SWITCH	22-0348	1

OUTLET PLUMBING ASSEMBLY



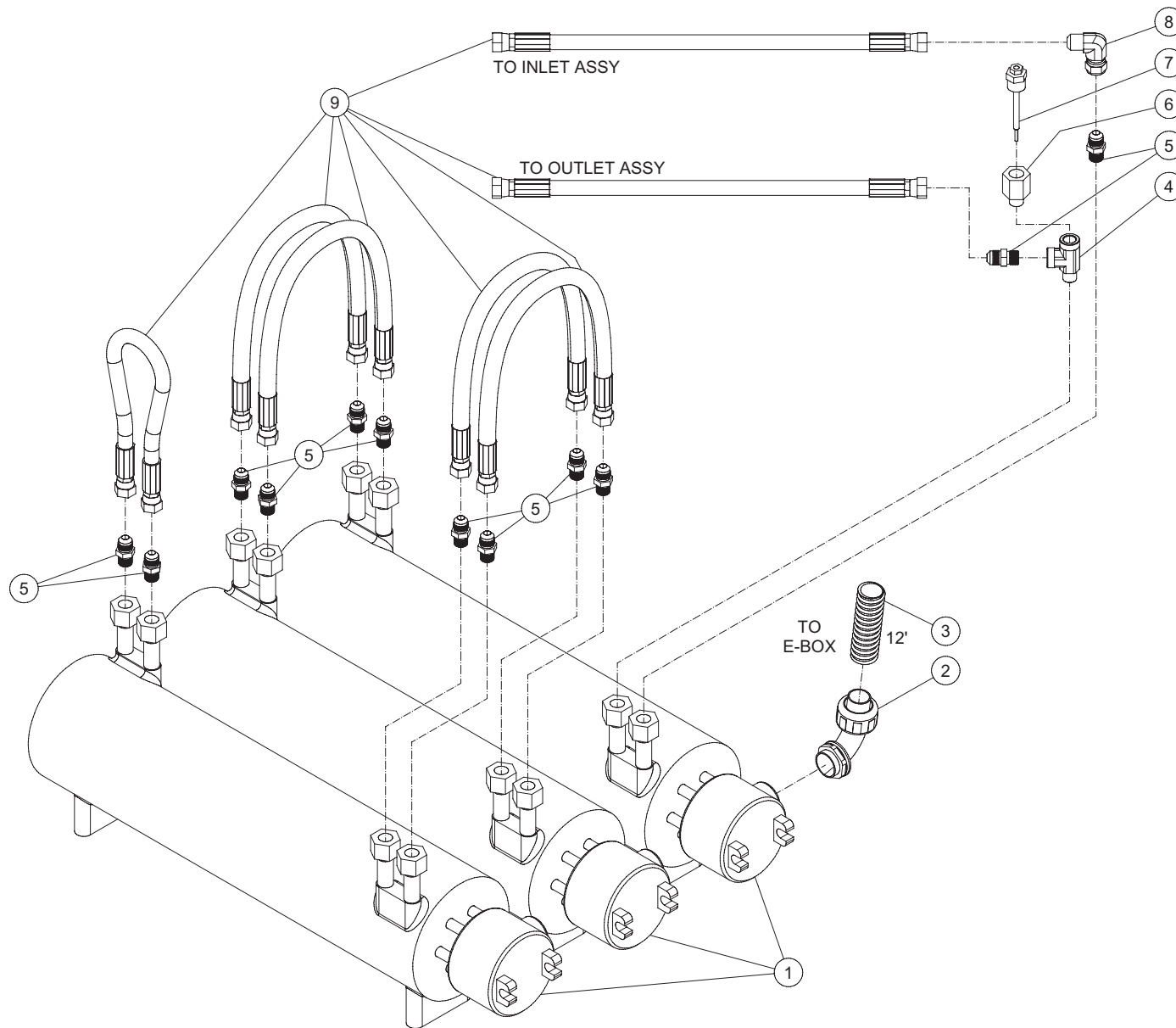
GHE-2503_3004-3460 OUTLET PLUMBING ASSEMBLY 042116 JDK

GHE-2503_3004-3460 OUTLET PLUMBING ASSEMBLY 042116 JDK

OUTLET PLUMBING ASSEMBLY

ITEM	DESCRIPTION	PART #	QTY
1	ELBOW	24-0092	2
2	COUPLER	23-0077	2
3	WATER OUTLET BRACKET	13-0199A18	1

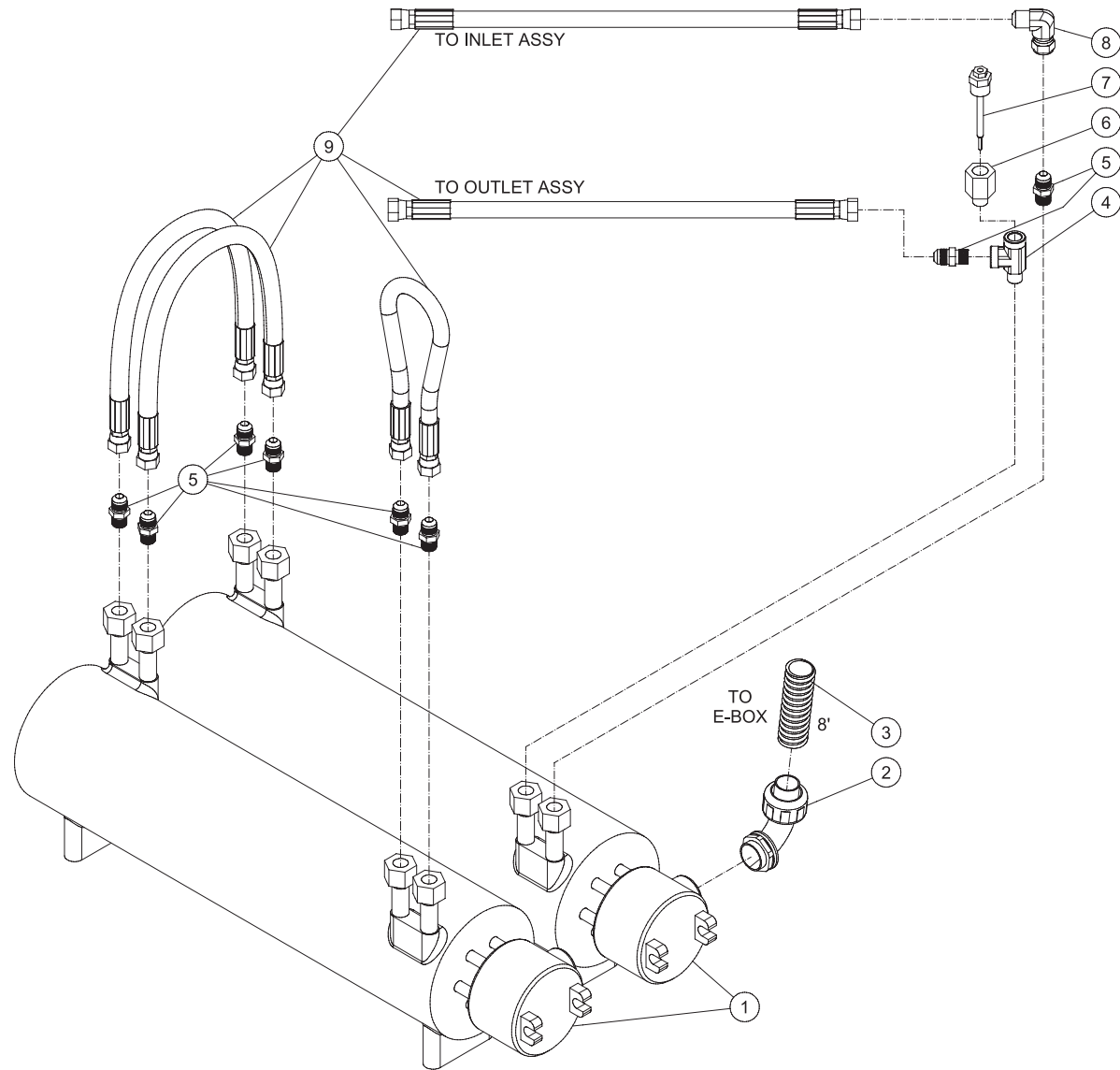
3 CARTRIDGE PLUMBING



3 CARTRIDGE PLUMBING

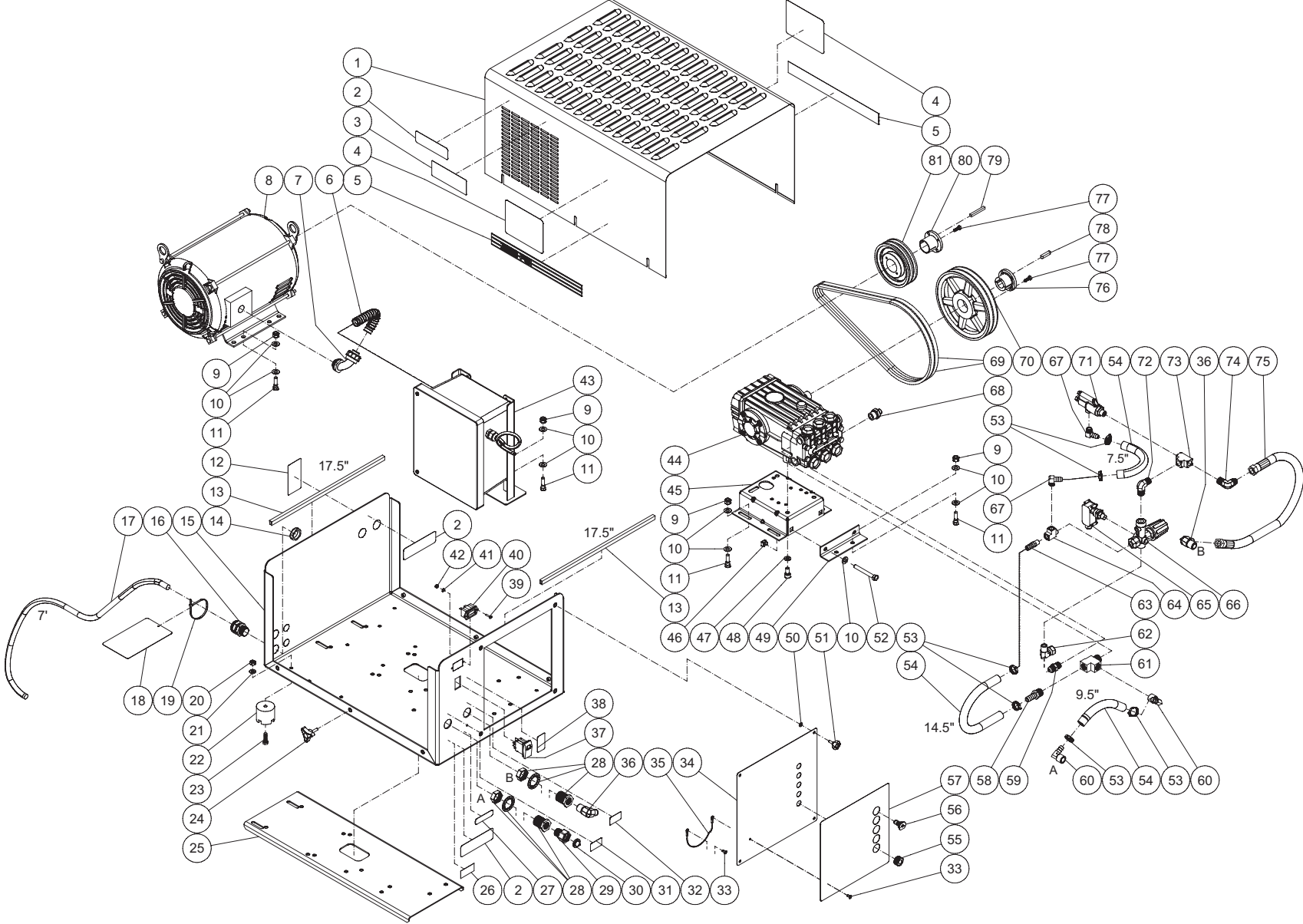
ITEM	DESCRIPTION	PART #	QTY
1	HEATING CARTRIDGE	32-1188	3
2	CONDUIT ELBOW	32-0907	3
3	CONDUIT FLEX *(TWELVE FEET REQUIRED)	32-0908	3
4	STREET TEE	23-0058	1
5	NIPPLE	24-0002	12
6	REDUCER	24-0048	1
7	ADJUSTABLE THERMOSTAT	32-0962	1
8	90° ELBOW FITTING	24-0272	1
9	HOSE - 3/8" X 20" 6000PSI R2 BLK	15-0368	7
*MUST ORDER IN ONE FOOT LENGTHS			

2 CARTRIDGE PLUMBING



2 CARTRIDGE PLUMBING			
ITEM	DESCRIPTION	PART #	QTY
1	HEATING CARTRIDGE	32-1188	2
2	CONDUIT ELBOW	32-0907	2
3	CONDUIT FLEX *(EIGHT FEET REQUIRED)	32-0908	2
4	STREET TEE	23-0058	1
5	NIPPLE	24-0002	8
6	REDUCER	24-0048	1
7	ADJUSTABLE THERMOSTAT	32-0962	1
8	90° ELBOW FITTING	24-0272	1
9	HOSE - 3/8" X 20" 6000PSI R2 BLK	15-0368	5
*MUST ORDER IN ONE FOOT LENGTHS			

CW UNIT ASSEMBLY

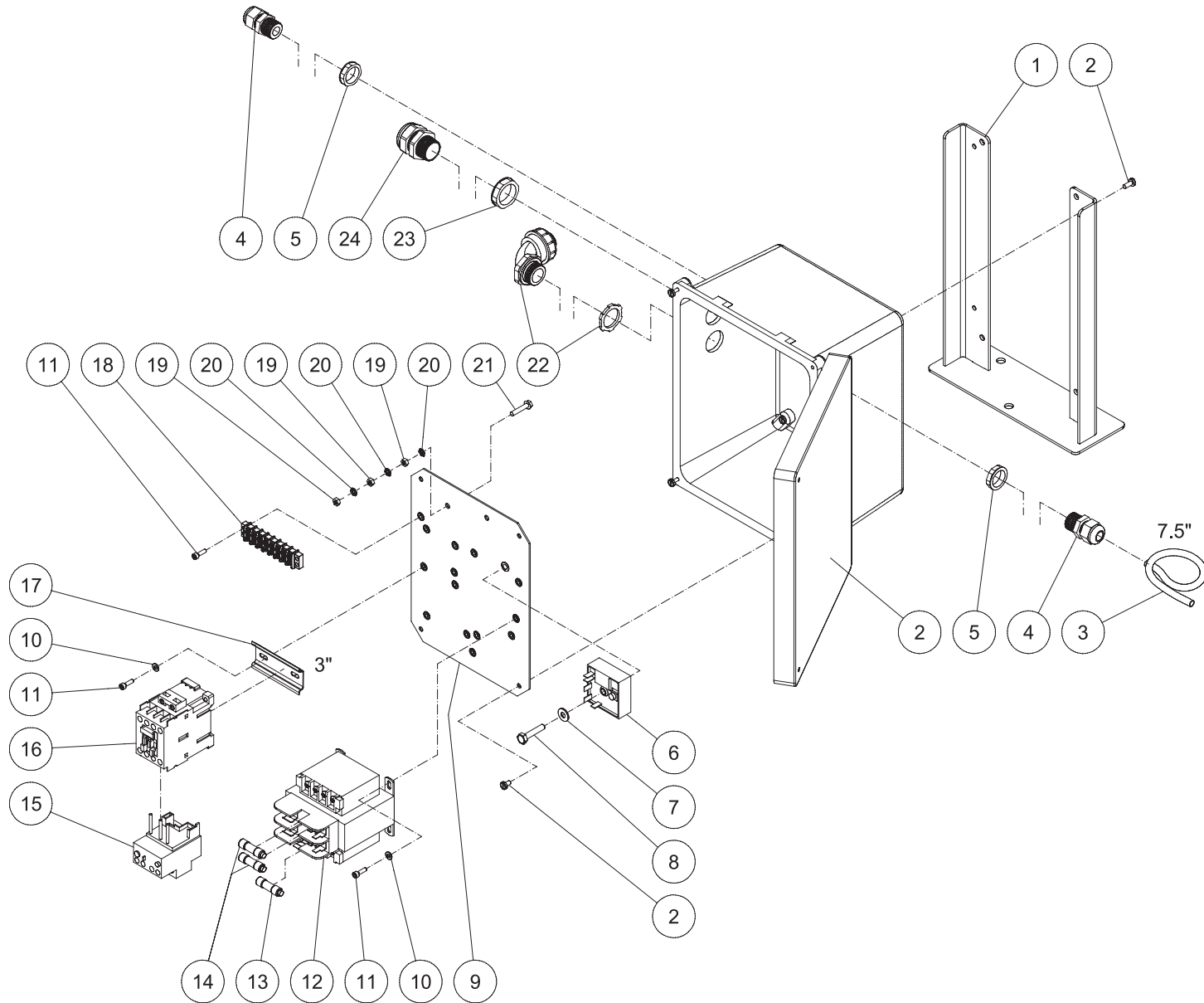


DH-2503_3004-AE0E4G CW UNIT ASSEMBLY 081417 JJR

UNIT ASSEMBLY							
ITEM	DESCRIPTION	PART #	QTY	ITEM	DESCRIPTION	PART #	QTY
1	HOOD	21-0195	1	47	LOCKWASHER	29-0055	4
2	DECAL - RISK OF INJURY	N/A	3	48	BOLT	27-8471	4
3	DECAL-CAUT: HOT SUR/HOT DIS E/S	N/A	1	49	TENSION BRACKET	20-0584A18	1
4	DECAL - LOGO	N/A	2	50	WASHER	28-1045	4
5	DECAL - 14" STRIPE (3004)	N/A	2	51	KNOB	62-0057	4
-	DECAL - 14" STRIPE (2503)	N/A	2	52	BOLT	27-0576	2
6	CONDUIT (3004) *(TWO FEET REQUIRED)	32-0486	1	53	HOSE CLAMP	42-0011	6
-	CONDUIT (2503) *(TWO FEET REQUIRED)	32-0486	1	54	HOSE *(TWO FEET REQUIRED)	15-0007	1
7	CONDUIT ELBOW	32-0487	1	55	GROMMET	33-0002	5
8	MOTOR - 8HP (3004)	2-0110	1	56	NOZZLE (3004)	18-0402	1
-	MOTOR - 6HP (2503)	2-0091	1	-	NOZZLE (2503)	18-0392	1
9	NUT	30-5159	13	-	NOZZLE (3004)	18-0403	1
10	WASHER	28-0123	28	-	NOZZLE (2503)	18-0393	1
11	BOLT	27-9563	13	-	NOZZLE (3004)	18-0404	1
12	DECAL - SILVER STICKER	N/A	1	-	NOZZLE (2503)	18-0395	1
13	EDGING *(THREE FEET REQUIRED)	33-0020	1	-	NOZZLE (3004)	18-0405	1
14	ELECTRICAL LOCKNUT	32-0292	1	-	NOZZLE (2503)	18-0396	1
15	FRAME	21-0193	1	57	DECAL - SERVICE PANEL	N/A	1
16	CORD RELIEF	9-0046	1	58	BARB	23-0045	1
17	CORD	32-0025	1	59	NIPPLE	24-0002	1
18	TAG - WARNING RISK OF ELECTROCUTION	34-1035	1	60	HOSE BARB	23-0418	2
19	CABLE TIE	33-0022	1	-		15-0007	1
20	LOCKNUT	30-5158	4	61	TEE	23-0124	1
21	WASHER	28-0122	4	62	ELBOW	24-0046	1
22	ISOLATOR	14-0008	4	63	HOSE BARB	23-0120	1
23	BOLT	27-5024	4	64	TEE	23-0127	1
24	KNOB	7-0168	6	65	PRESSURE SWITCH	22-0171	1
25	PLATE (3004)	21-0240	1	66	UNLOADER	8-0361	1
26	DECAL - MADE IN USA	34-3553	1	67	ELBOW	23-0119	2
27	DECAL - WARNING POTABLE WATER (E/S)	N/A	1	68	RELIEF VALVE	22-0371	1
28	ADAPTER	23-0365	2	69	BELT (3004)	11-0030	2
29	SWIVEL	23-0095	1	-	BELT (2503)	11-0031	2
30	FILTER	19-0001	1	70	SHEAVE (3004)	10-0007	1
31	DECAL - INLET (E/S)	N/A	1	-	SHEAVE (2503)	10-0104	1
32	DECAL - OUTLET	N/A	1	71	REGULATING VALVE	22-0501	1
33	RIVET	53-0009	2	-	BYPASS HOSE	15-0007	1
34	SERVICE PANEL	21-0194	1	72	ELBOW	24-0131	1
35	LANYARD	33-0424	1	73	TEE	23-0041	1
36	90° ELBOW FITTING	24-0074	2	74	ELBOW	24-0092	1
37	SWITCH	32-0801	1	75	HOSE	15-0221	1
38	DECAL - ON/OFF	N/A	1	76	BUSHING	9-0017	1
39	SCREW	27-8881	2	77	BOLT	27-0015	4
40	HOUR METER	32-0668	1	78	KEY	43-0048	1
41	STAR WASHER	28-1009	2	79	KEY	43-0078	1
42	NUT	30-0052	2	80	BUSHING (3004)	9-0008	1
43	ELECTRIC BOX ASSY	N/A	1	-	BUSHING (2503)	9-0010	1
44	PUMP (3004)	3-0202	1	81	SHEAVE (3004)	10-0041	1
-	PUMP (2503)	3-0203	1	-	SHEAVE (2503)	10-0067	1
45	PUMP HAT	5-0153A18	1	-	DECAL SET (3004)	71-3001	1
46	CLIP NUT	30-6025	2	-	DECAL SET (2503)	71-3000	1

*MUST ORDER IN ONE FOOT LENGTHS

CW ELECTRIC BOX ASSEMBLY



GHE-2503_3004 CW UNIT E-BOX ASSEMBLY 082416 JDK

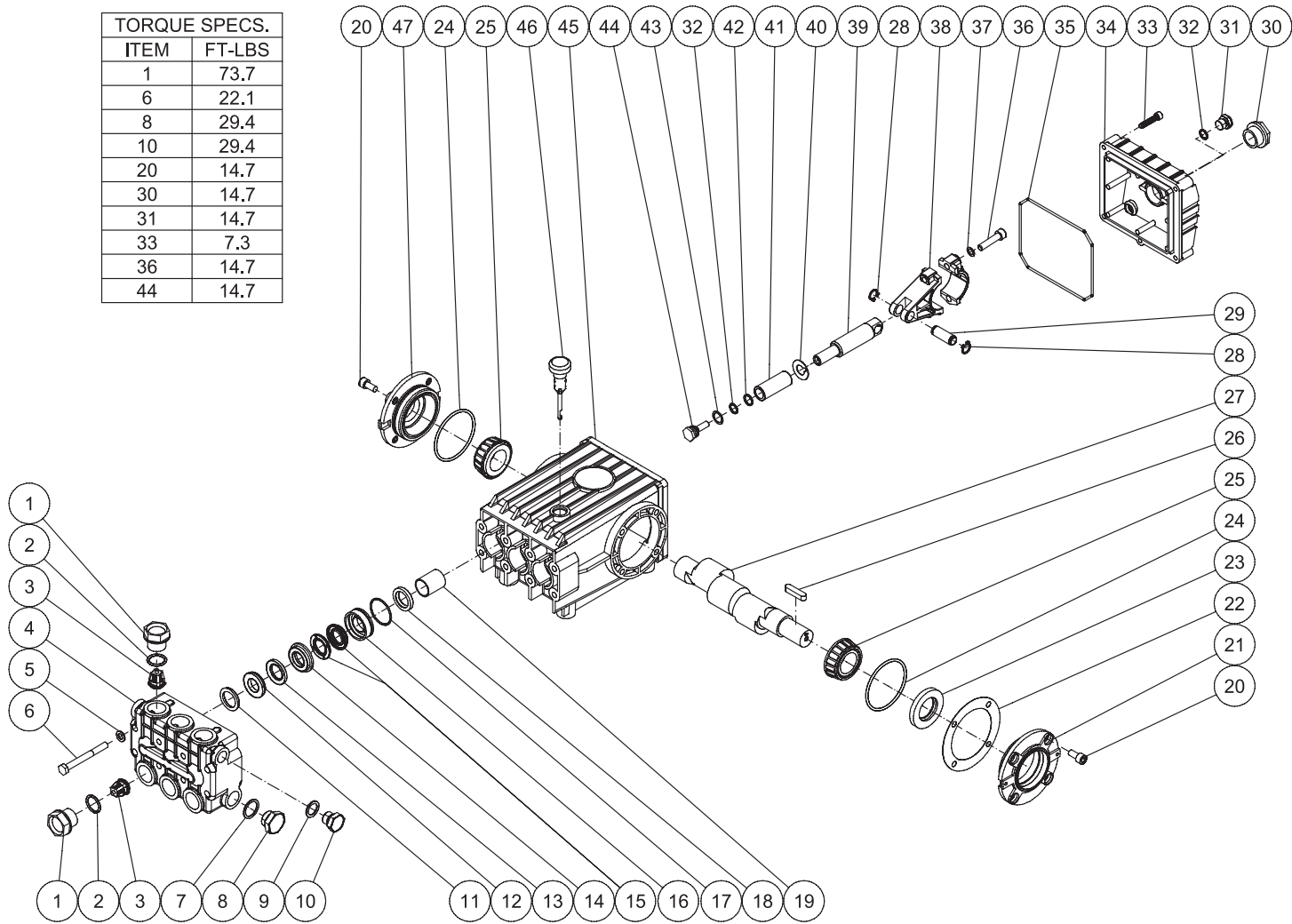
CW ELECTRIC BOX ASSEMBLY

ITEM	DESCRIPTION	PART #	QTY
1	BRACKET	13-0227A01	1
2	ELECTRICAL BOX	32-0799	1
3	WRAP *(ONE FOOT REQUIRED)	33-0114	1
4	STRAIN RELIEF	32-0437	2
5	ELECTRICAL LOCKNUT	32-0108	2
6	TIMER SWITCH	32-0800	1
7	WASHER	28-0002	1
8	BOLT	27-0017	1
9	CONTROL PANEL	20-0723A06	1
10	WASHER	28-0010	4
11	SCREW	27-8835	6
12	TRANSFORMER	32-0735	1
13	FUSE	32-0743	1
14	FUSE	32-0467	2
15	OVERLOAD RELAY (3004)	32-0482	1
-	OVERLOAD RELAY (2503)	32-0481	1
16	CONTACTOR (2503)	32-0329	1
-	CONTACTOR (3004)	32-0327	1
17	DIN RAIL *(ONE FOOT REQUIRED)	32-0316	1
18	TERMINAL STRIP	32-0436	1
19	NUT	30-6001	3
20	STAR WASHER	28-1009	3
21	BOLT	27-8807	1
22	CONDUIT ELBOW	32-0487	1
23	ELECTRICAL LOCKNUT	32-0292	1
24	CORD RELIEF	9-0046	1

*MUST ORDER IN ONE FOOT LENGTHS

PUMP (3-0202 AND 3-0203)

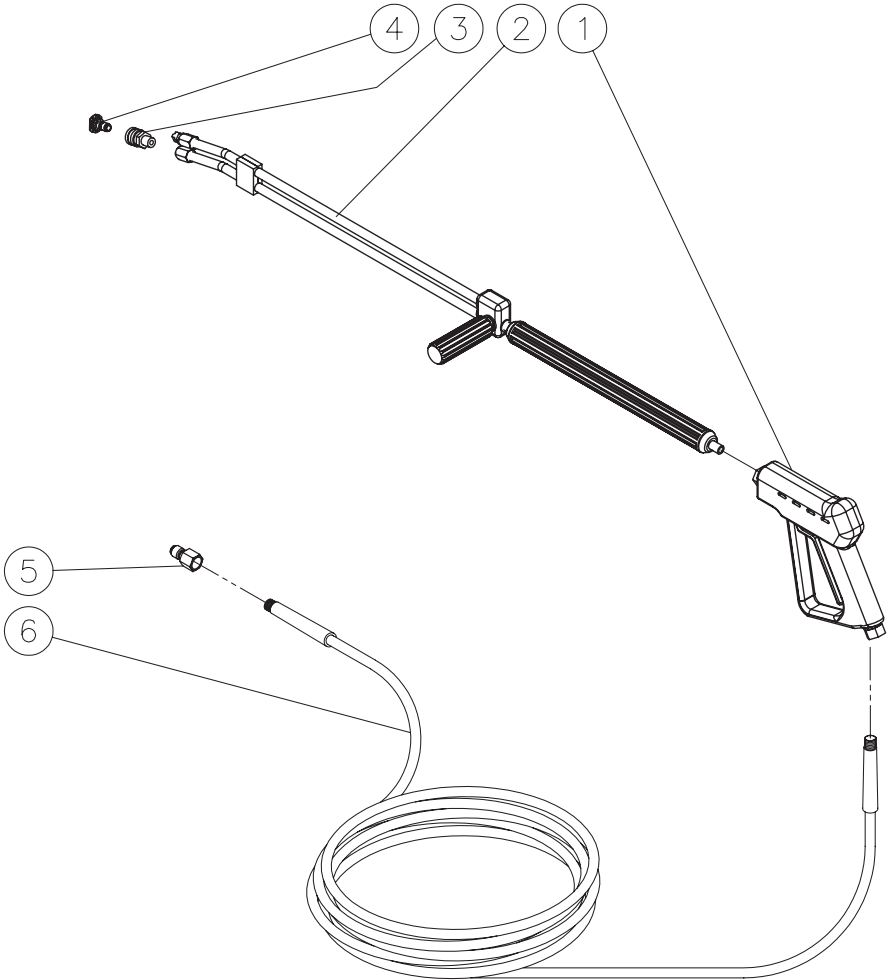
TORQUE SPECS.	
ITEM	FT-LBS
1	73.7
6	22.1
8	29.4
10	29.4
20	14.7
30	14.7
31	14.7
33	7.3
36	14.7
44	14.7



PUMP ASSEMBLY							
ITEM	DESCRIPTION	PART #	QTY	ITEM	DESCRIPTION	PART #	QTY
1	VALVE CAP	46-0889	6	25	BEARING	48-0012	2
2	O-RING	25-0012	6	26	KEY	43-0048	1
3	VALVE (SEE KIT 70-0009)	22-0056	6	27	CRANKSHAFT	46-0050	1
4	MANIFOLD	46-0890	1	28	RETAINING RING	46-0103	6
5	WASHER	28-1039	8	29	CONNECTING ROD PIN	43-0032	3
6	BOLT	27-8185	8	30	OIL LEVEL INDICATOR	46-0114	1
7	WASHER	28-1038	2	31	PLUG	39-0017	1
8	PLUG	39-0019	2	32	O-RING	25-0014	4
9	WASHER	28-1002	2	33	BOLT	27-8404	5
10	PLUG	39-0018	2	34	CRANKCASE OPEN COVER	46-0295	1
11	HEAD RING (SEE KIT 70-0030 AND 852-0122)	70-0030	3	35	O-RING	25-0339	1
12	V-PACKING SUPPORT (SEE KIT 70-0147 AND 852-0122)	26-0098	3	36	BOLT	27-8435	6
13	O-RING (SEE KIT 70-0147 AND 70-0148 AND 852-0122)	25-0207	3	37	LOCKWASHER	29-0154	6
14	HIGH PRESSURE INTERMEDIATE SEAL RETAINER (SEE KIT 70-0148)	46-0659	3	38	CONNECTING ROD	46-0051	3
15	PRESSURE SEAL (SEE KIT 70-0147 AND 852-0122)	26-0197	3	39	PISTON ROD	46-0056	3
16	LOW PRESSURE SEAL RETAINER	46-0057	3	40	SLINGER WASHER	46-0146	3
17	O-RING (SEE KIT 852-0122)	25-0015	3	41	PLUNGER	46-0052	3
18	OIL SEAL	26-0047	3	42	BACK-UP RING	46-0109	3
19	BUSHING	9-0029	3	43	WASHER	28-0400	3
20	BOLT	27-8431	8	44	NUT / PISTON	46-0069	3
21	CRANKCASE COVER	46-0296	1	45	CRANKCASE	46-0047	1
22	SHIM	46-0113	1	46	OIL DIP STICK	46-0144	1
23	OIL SEAL	26-0049	1	47	CRANKCASE COVER	46-0336	1
24	O-RING	25-0013	2				

REPLACEMENT KITS				
KIT#	DESCRIPTION	ITEMS	# OF ASSEMBLIES	# OF CYLINDERS
70-0009	VALVES	3	6	3
70-0030	HEAD RING	11	3	3
70-0147	V-PACKING	12, 13, 15	3	3
70-0148	INTERMEDIATE RETAINER	13, 14	3	3
852-0122	V-PACKING ASSY	11-13, 15, 17	3	3

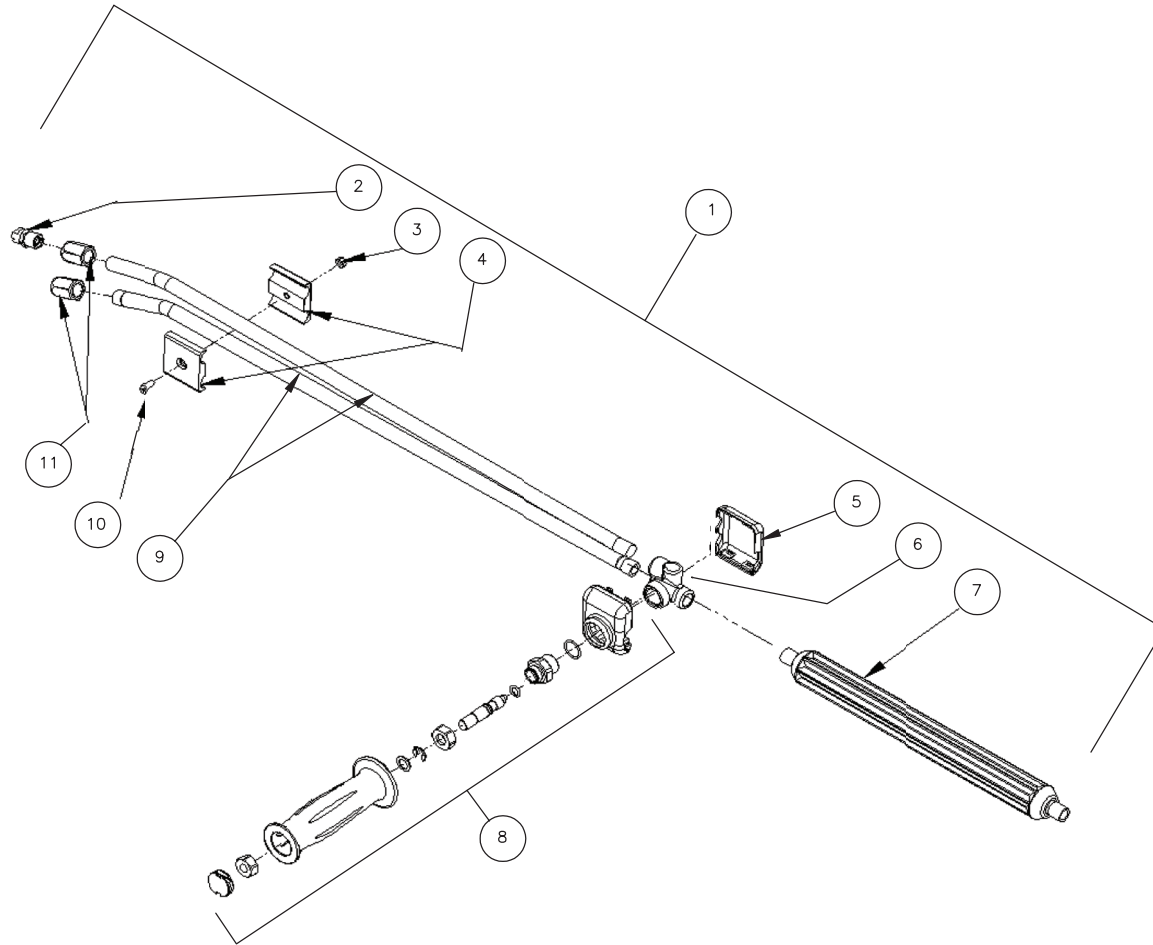
GUN / WAND / HOSE ASSEMBLY



ELECTRIC HW GUN WAND HOSE ASSEMBLY 082216 JDK

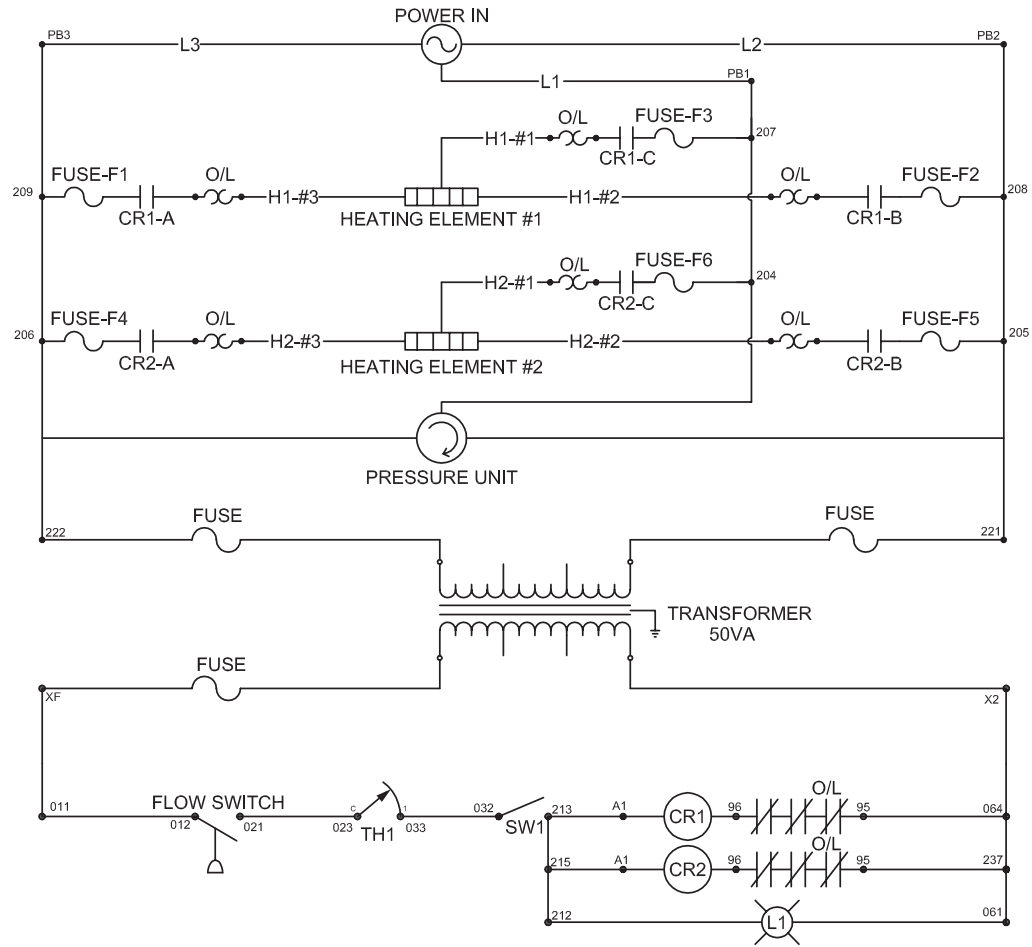
ELECTRIC HW GUN WAND HOSE ASSY_HAE 082216 JDK			
GUN/WAND/HOSE ASSEMBLY			
REF. #	DESCRIPTION	PART #	QTY.
1	Gun Assembly	16-0446	1
2	Dual Lance 36" (2503)	16-0416	1
-	Dual Lance 48" (3004)	16-0417	1
3	Quick Connect Socket	17-0028	1
4	Nozzle- 0003.5 (2503)	18-0392	1
-	Nozzle- 1503.5 (2503)	18-0393	1
-	Nozzle- 2503.5 (2503)	18-0395	1
-	Nozzle- 4003.5 (2503)	18-0396	1
-	Nozzle- 0004.5 (3004)	18-0402	1
-	Nozzle- 1504.5 (3004)	18-0403	1
-	Nozzle- 2504.5 (3004)	18-0404	1
-	Nozzle- 4004.5 (3004)	18-0405	1
5	Quick Connect Plug	17-0006	1
6	High Pressure Hose Assembly (2503)	15-0146	1
-	High Pressure Hose Assembly (3004)	15-0166	1

DUAL LANCE ASSEMBLY

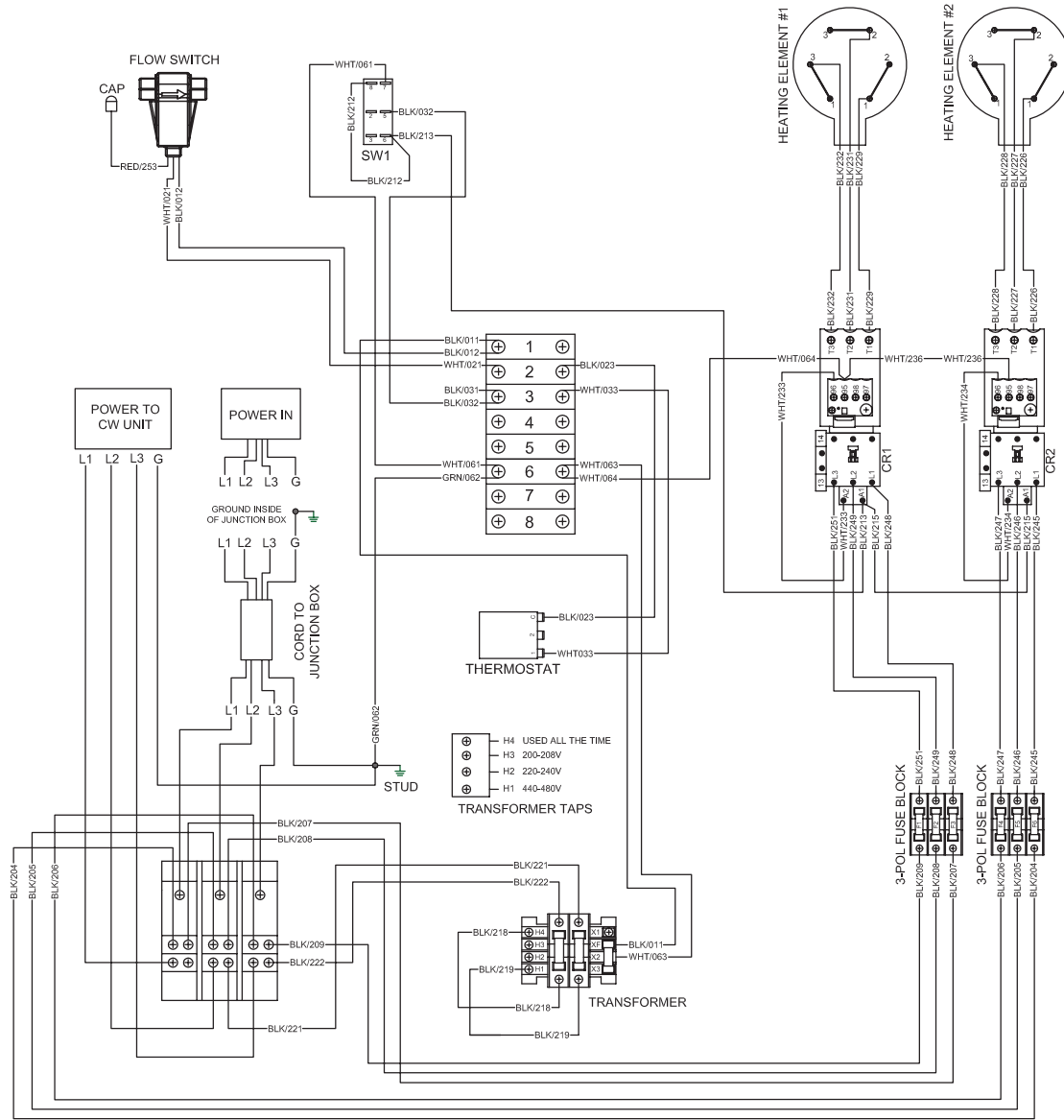


DUAL LANCE ASSEMBLY (16-0416 & 16-0417)			
REF. #	DESCRIPTION	PART #	QTY.
1	Dual Lance Assembly - 36" (Inc. 2-11)	16-0416	1
-	Dual Lance Assembly - 48" (Inc. 2-11)	16-0417	1
2	Detergent Nozzle	18-0110	1
3	Nut	30-6001	1
4	Clamp	16-0420	2
5	Lower Valve Cover (See 16-0416 or 16-0417)	N/A Sep.	1
6	Housing (See 16-0416 or 16-0417)	N/A Sep.	1
7	Lance	16-0419	1
8	Handle Repair Kit	70-0419	1
9	Lance (See 16-0416)	N/A Sep.	2
-	Lance (See 16-0417)	N/A Sep.	2
10	Screw	27-8196	1
11	Nozzle Adapter	24-0280	2

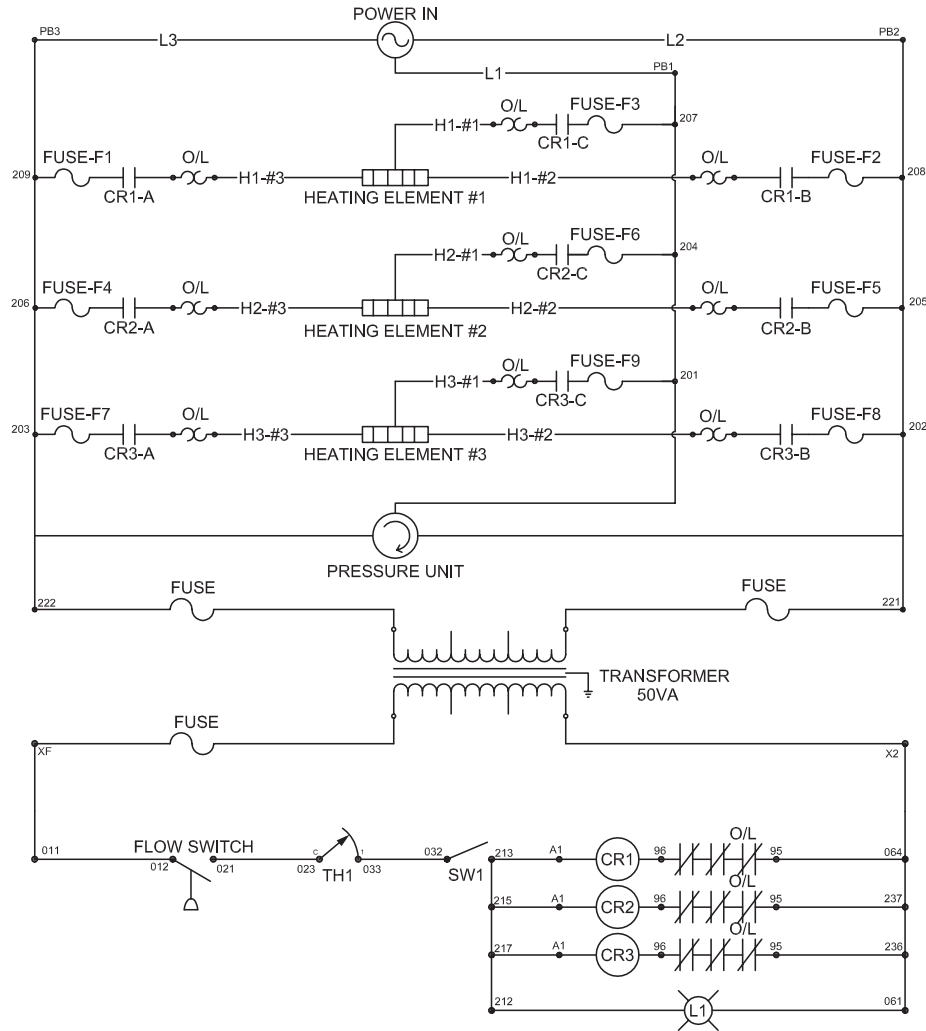
2503 HEATER WIRE SCHEMATIC



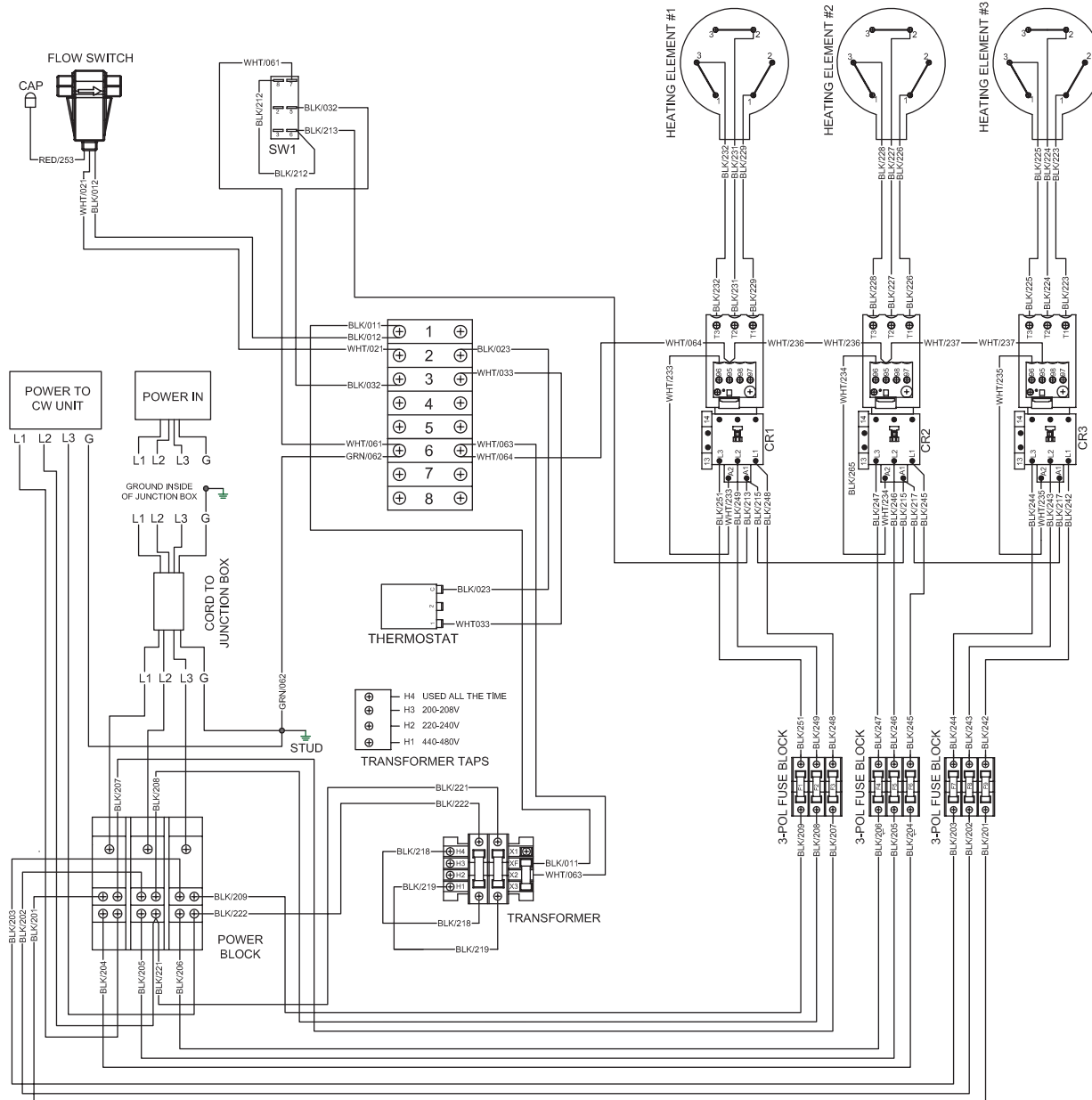
2503 HEATER WIRE DIAGRAM



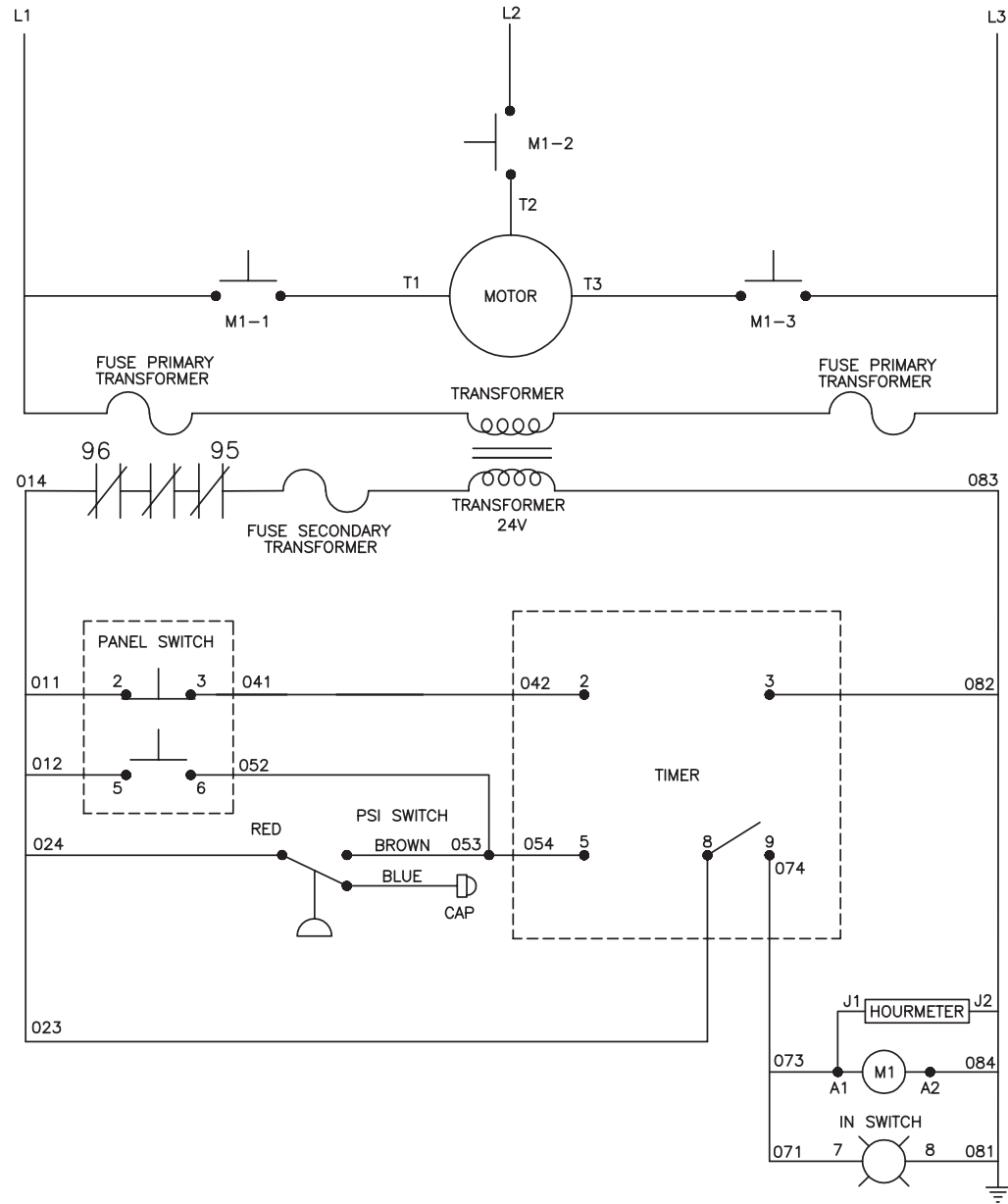
3004 HEATER WIRE SCHEMATIC



3004 HEATER WIRE DIAGRAM

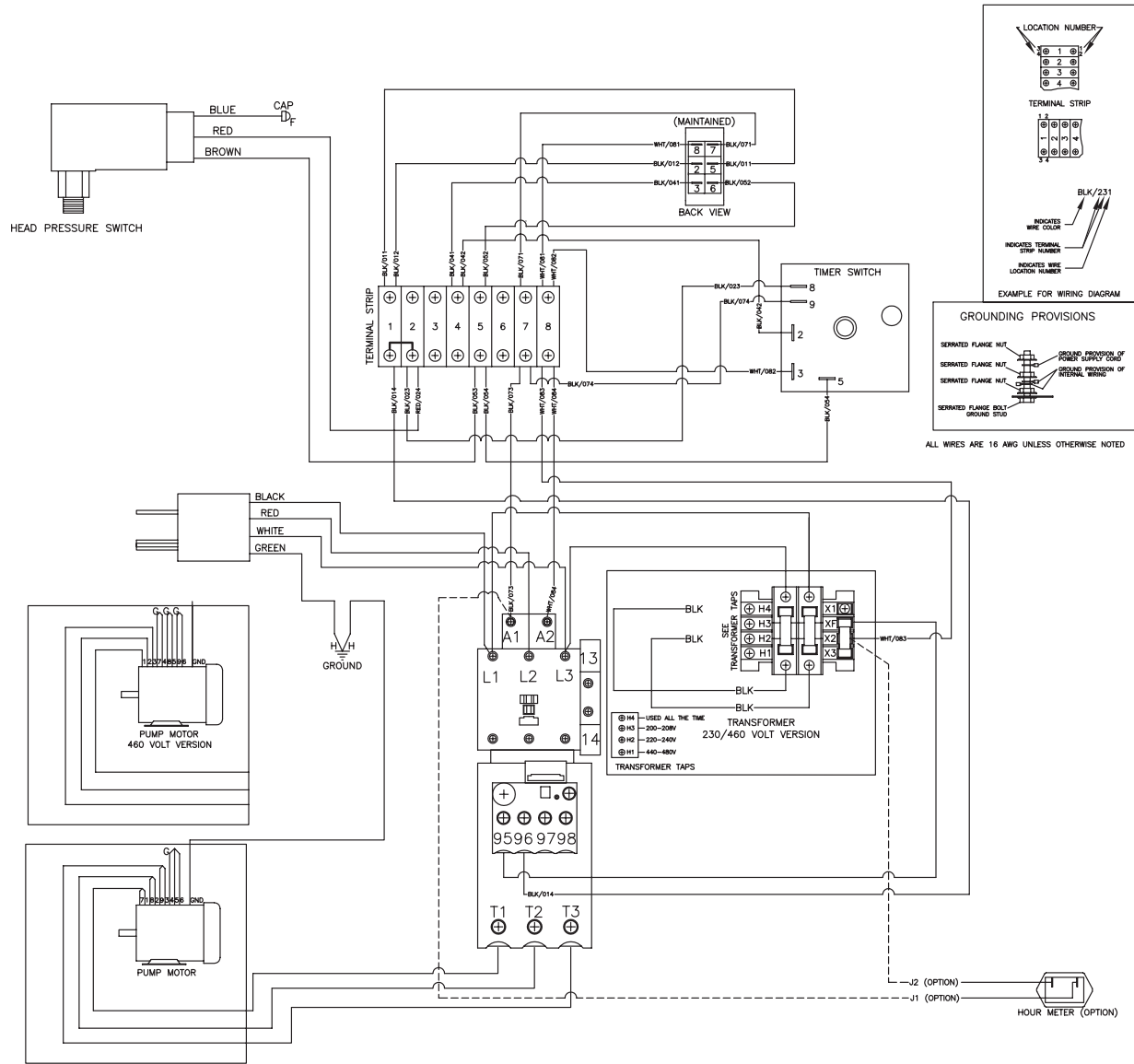


2503_3004 CW UNIT WIRE SCHEMATIC



CW-2004-3004-SME3 230V-480V WIRE SCHEMATIC 110510

2503_3004 CW UNIT WIRE DIAGRAM



CW-2004-3004-SME3 230V-480V WIRE DIAGRAM 110510

