

PARTS LIST FOR
2503 SERIES
PORTABLE
GASOLINE DRIVEN/DIRECT DRIVE
TOP FIRED OIL HEATED
HOT WATER PRESSURE WASHER
(AFTER SERIAL #15100771)

HONDA OIL GRADE:	SAE 10W-30
HONDA OIL CAPACITY:	20 oz.
PUMP OIL GRADE:	15W20 DETERGENT
PUMP OIL CAPACITY:	16.9 oz.
FUEL NOZZLE:	1.25 60°B DELAVAN
BTU INPUT:	210,000 / HOUR
PRESSURE NOZZLE SIZE:	3.0

This Parts Listing has been compiled for your benefit. You can be assured your hot water pressure washer was constructed and designed with quality and performance in mind. Each component has been rigorously tested to insure the highest level of quality.

The contents of this Parts Listing are based on the latest product information available at the time of publication. The manufacturer reserves the right to make changes in price, color, materials, equipment, specifications or models at any time without notice.

WARNING

THIS IS A PROFESSIONAL HIGH PRESSURE, HOT WATER PRESSURE WASHER. CAUTION SHOULD BE OBSERVED WHEN USING OR REPAIRING THIS UNIT! READ AND FOLLOW THE SAFETY WARNINGS LISTED BELOW BEFORE ATTEMPTING ANY REPAIRS ON THIS PRESSURE WASHER!

SAFETY WARNINGS

1. NEVER alter or modify the equipment. Be sure any accessory items and system components being used will withstand the pressure developed. Use only genuine manufacturer parts for repair of your pressure washer. Failure to do so can cause hazardous operating conditions and will VOID warranty.
2. NEVER make adjustments on machinery while the unit is connected to the engine without first removing the ignition cable from the spark plug. Turning over the machinery by hand during adjustment or cleaning might start the engine and machinery with it, causing serious injury to the operator.
3. Know how to stop and bleed pressures quickly. Be thoroughly familiar with controls.
4. Before servicing the unit, turn unit off, relieve the water pressure and allow the unit to cool down. Do not make repairs while the unit is running. Service in a clean, dry, flat area. Block the wheels to prevent the unit from moving. Be especially careful to properly dispose of any flammable materials.
5. After testing the machine, DO NOT leave the pressurized unit unattended. Shut off the unit and release trapped pressure before leaving.

Table of Contents

NOTES	4
SPECIFICATIONS.....	5
FLOW CHART	6
EMF SYSTEM	6
GENERAL THEORY OF OPERATION	7
DECAL PLACEMENT.....	8
FRAME ASSEMBLY	10
ENGINE/PUMP ASSEMBLY (AFTER SERIAL #15100771)	12
HIGH PRESSURE PUMP (3-0417).....	14
UNLOADER (850-0252).....	16
PRESSURE SWITCH (22-0243).....	18
COIL DRAIN PLUG (850-0218).....	20
HEAT EXCHANGER/EMF SYSTEM	22
BOILER ASSEMBLY	24
GUN WAND/HOSE ASSEMBLY.....	26
DUAL LANCE ASSEMBLY (16-0416).....	28
FUEL TANK	30
FUEL PUMP (3-0020)	32
FUEL SOLENOID (44-0098).....	33
EMF SYSTEM (850-0403).....	34
ELECTRIC BOX ASSEMBLY	36
WIRING SCHEMATIC	38
WIRING DIAGRAM.....	39
ACCESSORIES	41
OPTION- ADJUSTABLE THERMOSTAT AND HOUR METER	42

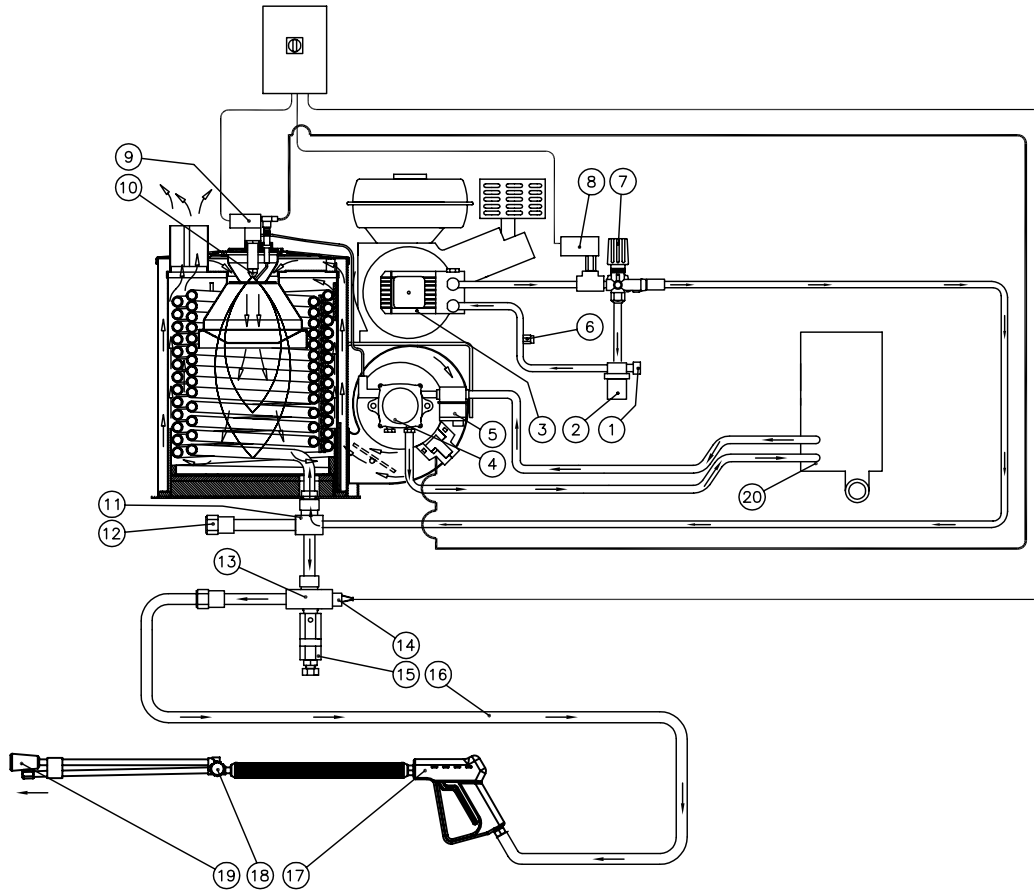
NOTES

DATE	SERIAL NUMBER	REASON FOR CHANGE
06/17/15	15100771	CHANGED PUMP FROM 3-0385 TO 3-0417

SPECIFICATIONS

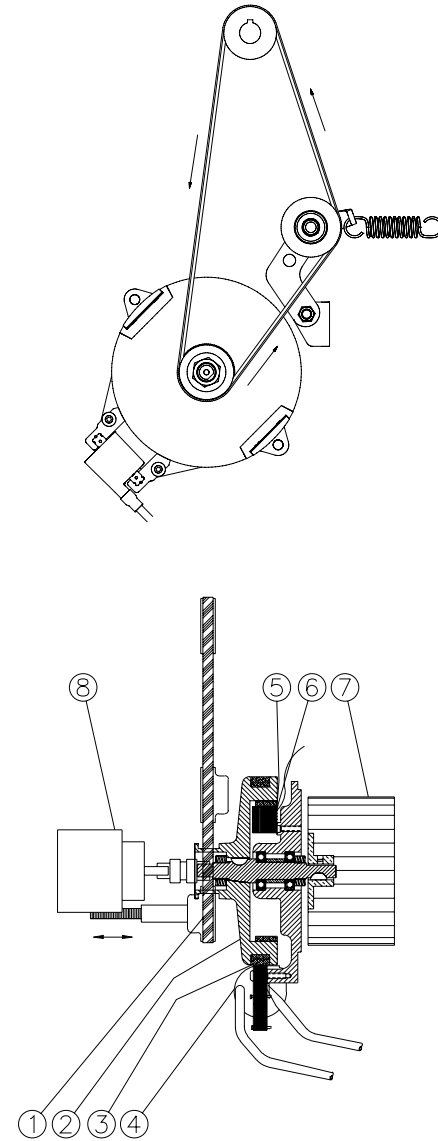
Operating Pressure (PSI/Bar):	2500/ 172 (+/- 5%)
Water Volume (GPM/lpm):	2.3/ 8.7 (+/- 5%)
Outlet Water Temperature (F/C)	130°F / 54°C (+/- 20°F) rise above inlet ambient (210°F / 99°C maximum)
Engine:	Honda
Model	GX200
Engine Type	Four Stroke, Overhead Valve, Single Cylinder
Oil Type	SAE 10W-30
Oil Capacity (oz. / liter)	20/.6
Low Oil Protection	Oil Alert
Fuel Type	Unleaded Gasoline 86 Octane Minimum
Fuel Capacity (Gal./liters)	.95/3.6
Starting	Recoil Rope
Maximum No Load RPM	3600 (+/- 100)
High Pressure Pump:	Direct Driven, Oil Bath, Triplex Piston
Oil Type	Mi-T-M Pump Oil #AW-4085-0016
Oil Capacity (oz. / liter)	16.9 / 0.5
Plungers	Ceramic
Manifold	Forged Brass
Valves	Stainless Steel
Unloader	Preset
Inlet Water Strainer	Removable Clear Bowl for inspection and cleaning of Stainless Steel Screen
Heat Dump Valve	Relieves heated water during unloader bypass stage
Burner Fuel System:	
Fuel Type	No. 1 or No. 2 Fuel Oil, Diesel or Kerosene
Fuel Capacity (Gal./liters)	4.46 / 16.9
Fuel Filter/ Water Separator	Spin On (10 Micron) Filter / E-Z Water Drain
Fuel Pump	Two Line, Single Stage
Fuel Pressure (PSI / BAR)	145 / 10
Fuel Nozzle	1.25 60° B Delavan
Fuel Consumption (GPH / LPH)	1.51 / 5.7 Cont. Burner
Electro Magnetic Firing (EMF) System:	Belt Driven (Patent # 5,954,494)
Ignition	Transistorized Magneto
Control Voltage	12 Volt DC
Blower	Forced Air
Heat Exchanger:	Vertical, Top Fired, Dual Spiral Coil
BTU Input	210,000
Efficiency	80-83% with #2 Fuel Oil / Diesel
Smoke Density	0-3 per ASTM D2156
Controls:	
On/ Off Switch	Industrial grade rocker switch
Pressure Switch	Shuts off burner fuel supply upon trigger release
High Limit Switch	Shuts off burner fuel supply when outlet water temp. exceeds 210°F / 99°C
Fuel Solenoid:	12 Volt
Safety Relief:	Relieves excess system pressure
Unit Net Weight (Lbs/Kg)	295 / 131.8
Unit Shipping Weight (Lbs/Kg)	411 / 186.4
Unit Net Dimensions (In/Cm)	43L x 29.5W x 36.5H / 109.5L x 75W x 93H
Unit Shipping Dimensions (In/Cm)	46.5L x 31.5W x 48.5H / 118L x 80W x 123H

FLOW CHART



WATER FUEL FLOW DIAGRAM 030613

EMF SYSTEM



EMF SYSTEM 031113

GENERAL THEORY OF OPERATION

WATER FLOW: Connect a pressurized water source to the INLET GARDEN HOSE CONNECTION (1) and turn on the water supply. The water will flow through a WATER STRAINER (2) which has a clear inspection bowl.

The water then travels into the TRIPLEX HIGH PRESSURE PUMP (3) which has an UNLOADER (7) that bypasses the water when the trigger gun is closed. To protect the pump from heated water during this bypass stage, a HEAT DUMP VALVE (6) will open at 140°F/60°C allowing the heated water to escape. The Heat Dump Valve automatically resets when the water cools. The PRESSURE SWITCH (8) controls the fuel supply to the burner.

From there, the water may be allowed to flow out of the DRAIN PLUG (12) or through the HEAT EXCHANGER INLET (11) where it is heated when the burner is on. As the water exits the HEAT EXCHANGER OUTLET (13), it enters a safety system which protects the operator from danger. The safety system contains a HIGH TEMPERATURE LIMIT SWITCH (14) which senses the water temperature and shuts off the fuel supply to the burner if it gets too hot. If the unloader fails to bypass the water or the burner remains on when the trigger gun is closed, the SAFETY RELIEF (15) will relieve and allow water to exit safely.

The heated water then flows through the HIGH PRESSURE HOSE (16) and to the TRIGGER GUN ASSEMBLY (17) which allows the operator to control the water spray. When the trigger gun is open, the water flows through the ADJUSTABLE PRESSURE DUAL LANCE (18) and exits the NOZZLE (19).

FUEL FLOW: The Fuel Pump draws fuel from the FUEL TANK (20) through a replaceable FUEL FILTER /WATER SEPARATOR (5) and into the FUEL PUMP (4). Fuel exits the fuel pump, into a FUEL SOLENOID VALVE (9) which controls fuel flow to the FUEL NOZZLE (10) where it ignites and burns in the heat exchanger.

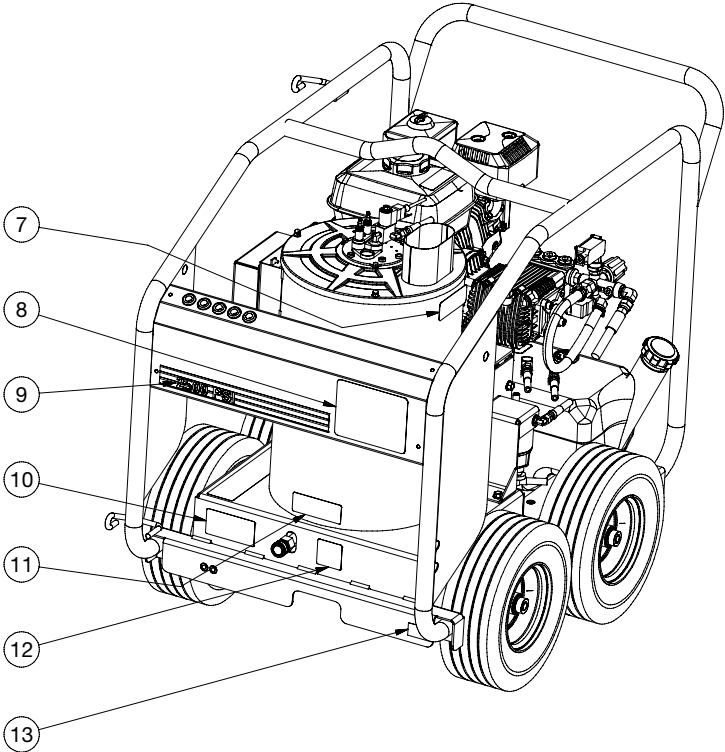
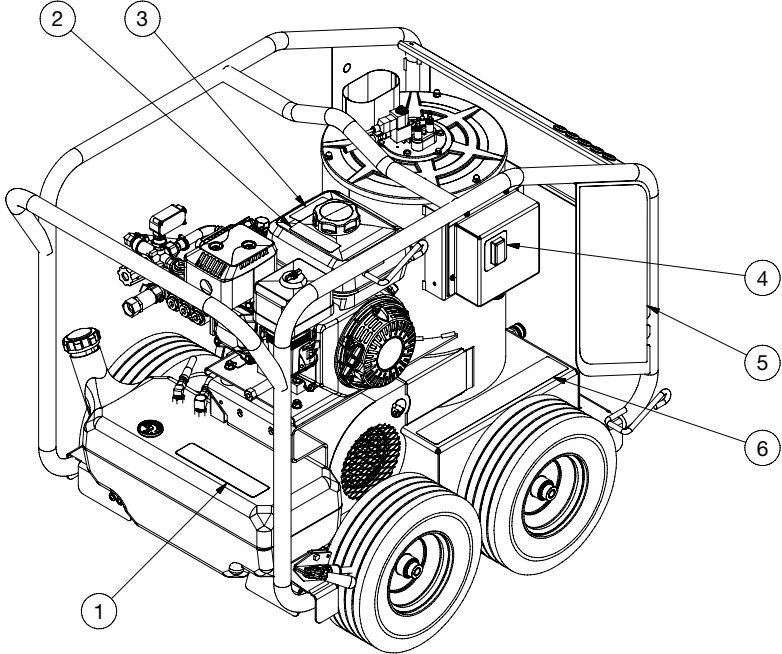
EMF SYSTEM: The patented Electro Magnetic Firing (EMF) System is an integrated system which gives all the requirements for combustion.

The BELT (1) from the power source turns the HUB (2) which has two EXTERIOR MAGNETS (3) attached. As these magnets spin past the IGNITION MODULE (4), a magnetic flux is created from which the ignition module produces a high voltage. This voltage arcs across the electrodes giving the spark that is needed for ignition.

This hub has an INTERNALLY MOUNTED MAGNET (5) which spins past a STATOR (6) that produces the voltage that controls the fuel supply to the heat exchanger. In addition to this, the hub also spins the BLOWER FAN (7) that forces the air into and through the heat exchanger.

The FUEL PUMP (8) is also connected to the hub by means of a flexible coupler.

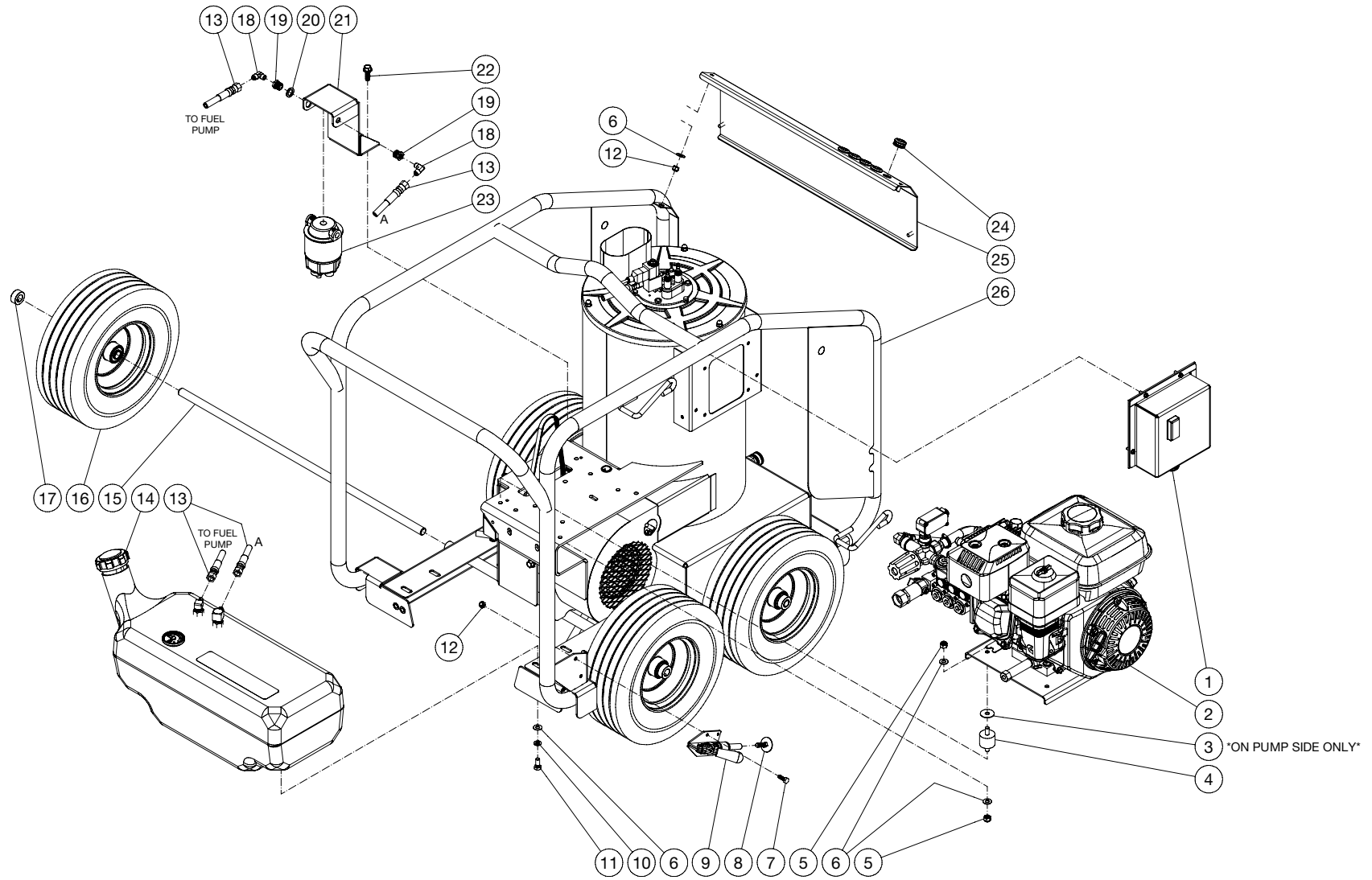
DECAL PLACEMENT



HSP_DH SMALL - DECAL PLACEMENT DEALER EXCLUSIVE 080117 JJR

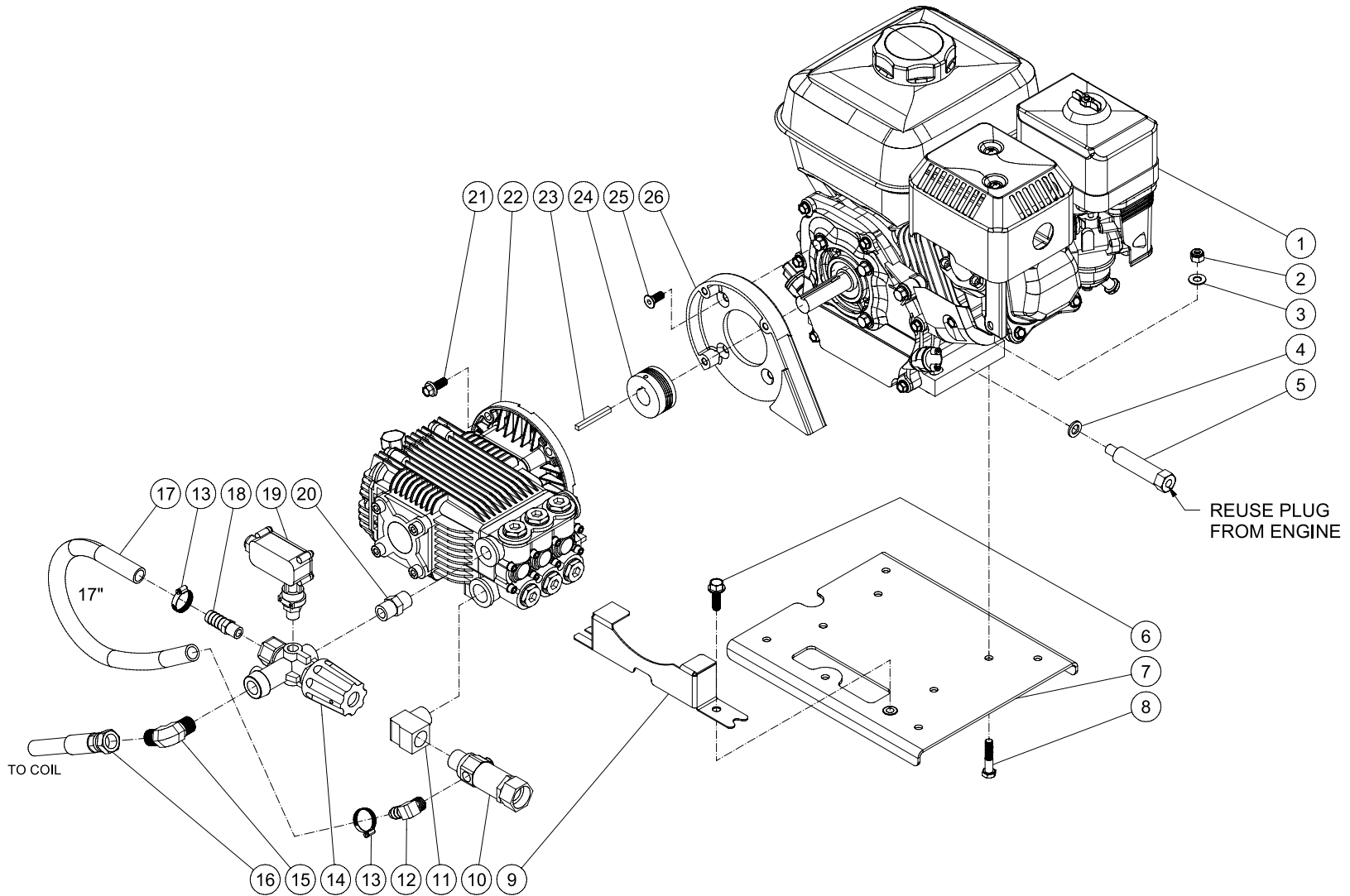
DH SMALL - DECAL PLACEMENT DEALER EXCLUSIVE 080117 JJR			
DECAL PLACEMENT			
1	DECAL - CAUTION: RISK OF FIRE (SEE 71-0009)	N/A	1
2	DECAL - RISK OF BURNS (SEE 71-0009)	N/A	1
3	DECAL - RISK OF FIRE (SEE 71-0009)	N/A	1
4	DECAL - BURNER ON/OFF (SEE 71-0009)	N/A	1
5	DECAL - OPERATIONS (SEE 71-0009)	N/A	1
6	DECAL - CAUTION: RISK OF INJURY (SEE 71-0009)	N/A	1
7	DECAL - HOT SURFACES (SEE 71-0009)	N/A	1
8	DECAL - LOGO	N/A	1
-	DECAL - LOGO	N/A	1
9	DECAL - STRIPE	N/A	1
-	DECAL - STRIPE	N/A	1
10	DECAL- SILVER STICKER	N/A	1
11	DECAL - WARNING: RISK OF EXPLOSION (SEE 71-0009)	N/A	1
12	DECAL - COIL DRAIN (SEE 71-0009)	N/A	1
13	DECAL - MADE IN USA	34-3553	1
-	DECAL SET	71-0009	1

FRAME ASSEMBLY



DH SMALL - UNIT ASSEMBLY 080317 JJR			
UNIT ASSEMBLY			
1	SMALL ELECTRIC BOX ASSEMBLY	N/A	1
2	ISOLATION PLATE/PUMP PLUMBING ASSEMBLY	N/A	1
3	WASHER	28-0057	3
4	ISOLATOR	14-0097	5
5	LOCKNUT	30-0157	10
6	WASHER	28-0003	18
7	BOLT	27-0015	2
8	BOLT	27-9550	1
9	PUSH/PULL TOGGLE CLAMP	33-0400	1
10	LOCKWASHER	29-0007	4
11	BOLT	27-0066	4
12	LOCKNUT	30-0155	6
13	FUEL HOSE	15-0147	2
14	FUEL TANK ASSEMBLY	N/A	1
15	AXLE	20-1315	2
16	WHEEL	14-0150	4
17	COLLAR	33-0351	4
18	ELBOW	23-0287	2
19	REDUCER	23-0111	2
20	WASHER	28-0606	1
21	FUEL FILTER BRACKET	20-1300A01	1
22	BOLT	27-1201	2
23	FUEL FILTER / WATER SEPERATOR	19-0070	1
24	GROMMET	33-0001	5
25	FRONT PANEL	20-1303A01	1
26	HEAT EXCHANGER/ EMF SYSTEM ASSEMBLY	N/A	1

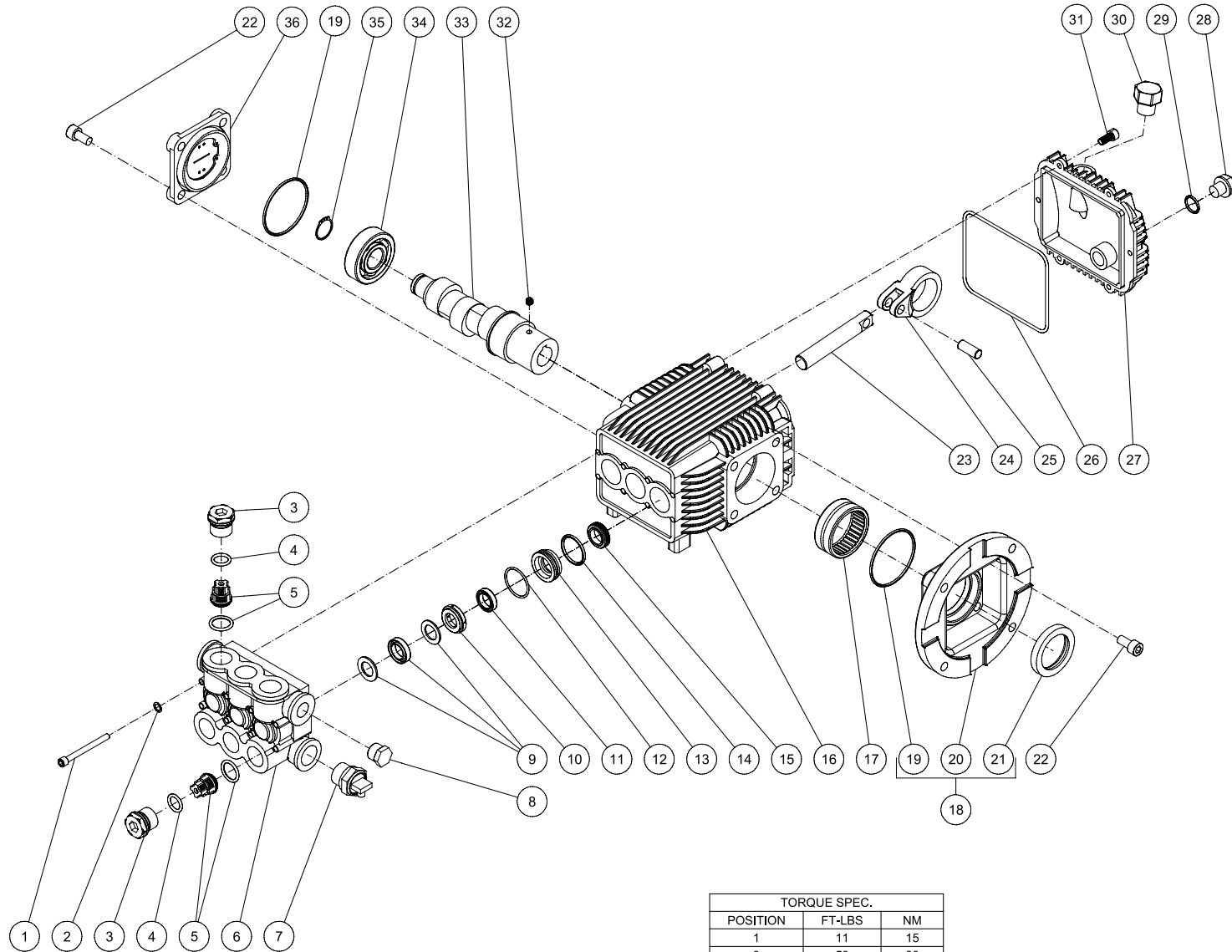
ENGINE/PUMP ASSEMBLY (AFTER SERIAL #15100771)



SMALL - ISO PLATE_PUMP PLUMBING_MITM 061715 JDK

SMALL-ISO PLATE PUMP PLUMBING MITM 061715 JDK			
ENGINE/PUMP ASSEMBLY			
ITEM	DESCRIPTION	PART #	QTY
1	ENGINE	1-0088	1
2	LOCKNUT	30-0157	4
3	WASHER	28-0003	4
4	WASHER	28-0604	1
5	OIL DRAIN	24-0343	1
6	BOLT	27-1201	1
7	ISOLATION PLATE	20-1324A01	1
8	BOLT	27-0069	4
9	BELTGUARD	20-1299A01	1
10	FILTER	19-0207	1
11	ELBOW	23-0035	1
12	ELBOW	23-0119	1
13	HOSE CLAMP	42-0011	2
14	UNLOADER	850-0252	1
15	ELBOW	24-0131	1
16	HIGH PRESSURE HOSE	15-0335	1
17	HOSE *(TWO FEET REQUIRED)	15-0007	1
18	HOSE BARB	23-0120	1
19	PRESSURE SWITCH	22-0243	1
20	NIPPLE	24-0010	1
21	BOLT	27-9524	3
22	PUMP	3-0417	1
23	KEY	43-0073	1
24	SHEAVE	10-0076	1
25	BOLT	27-0418	4
26	ENGINE EMF FLANGE	38-0069	1
*MUST ORDER IN ONE FOOT LENGTHS			

HIGH PRESSURE PUMP (3-0417)



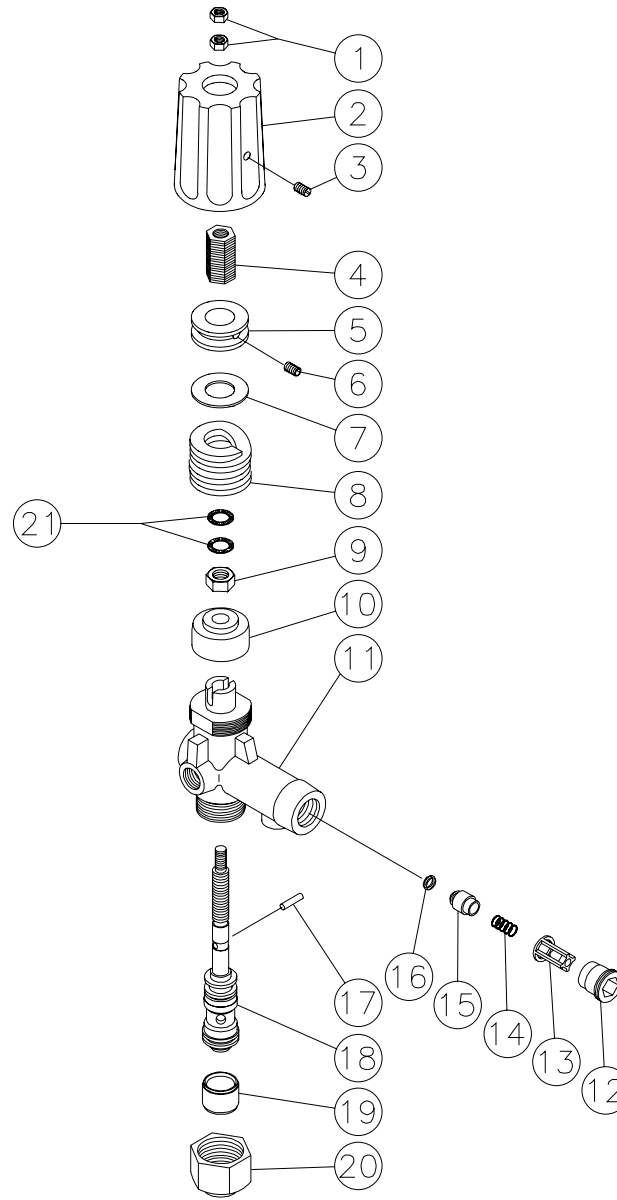
TORQUE SPEC.		
POSITION	FT-LBS	NM
1	11	15
3	59	80
22	18	24.4
30	7.4	10

3-0417 052215

3-0417 052215 JDK			
PUMP ASSEMBLY			
ITEM	DESCRIPTION	PART #	QTY
1	BOLT	27-0898	8
2	WASHER	28-0203	8
3	VALVE PLUG	39-0231	6
4	O-RING	25-0622	6
5	VALVE ASSEMBLY (SEE KIT 70-0502)	70-0502	6
6	MANIFOLD HEAD	46-1503	1
7	RELIEF VALVE	22-0005	1
8	PLUG	39-0102	1
9	HIGH PRESSURE PACKING (SEE KIT 70-0501)	N/A	3
10	SEAL COMPACTION RING	46-1311	3
11	LOW PRESSURE SEAL (SEE KIT 70-0501)	N/A	3
12	O-RING (SEE KIT 70-0501)	N/A	3
13	RETAINER RING	46-1312	3
14	O-RING	25-0663	3
15	OIL SEAL	46-1313	3
16	CRANKCASE	N/A	1
17	NEEDLE BEARING	48-0096	1
18	FLANGE - PUMP W/OIL SEAL & O-RING	38-0067	1
19	O-RING	25-0634	2
20	FLANGE	N/A	1
21	OIL SEAL	26-0320	1
22	BOLT	27-8431	8
23	PISTON - COATED	46-1504	3
24	CONNECTING ROD	46-1595	3
25	PISTON - PIN	46-1505	3
26	O-RING	25-0604	1
27	CRANKCASE COVER	46-1594	1
28	DRAIN PLUG	39-0376	1
29	O-RING	25-0606	1
30	OIL CAP	46-1593	1
31	BOLT	27-8401	6
32	SET SCREW	27-8886	1
33	CRANKSHAFT	N/A	1
34	BALL BEARING	48-0102	1
35	SNAP RING	46-1596	1
36	SIGHT GLASS ASSEMBLY	46-1597	1

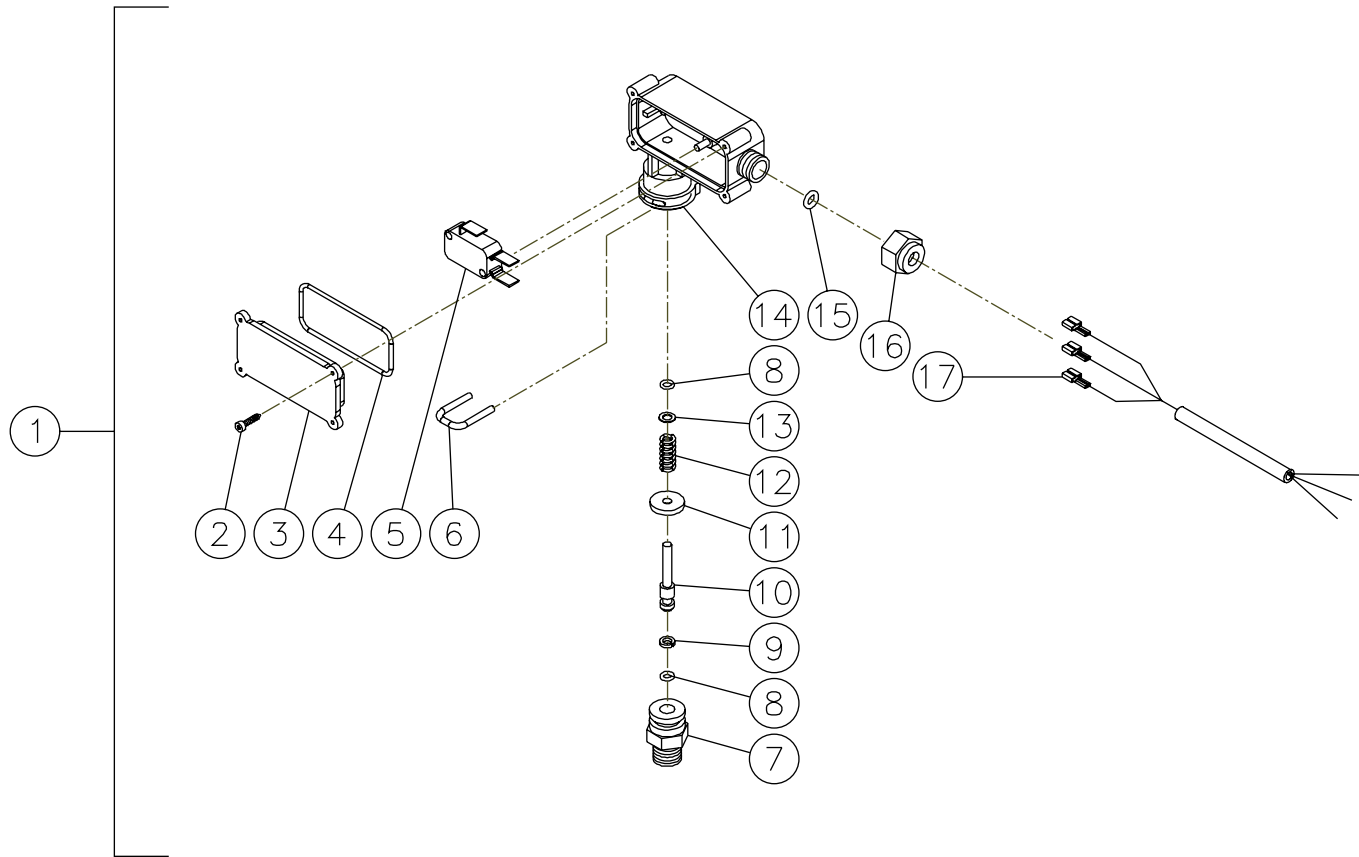
REPLACEMENT KITS				
KIT #	DESCRIPTION	ITEMS	# OF ASSEMBLIES	# OF CYLINDERS
70-0501	KITS - PACKINGS	9, 11, 12	3, 3, 3	3
70-0502	KITS - VALVES W/ O-RING	5	6	3

UNLOADER (850-0252)



UNLOADER (850-0252)			
REF. #	DESCRIPTION	PART #	QTY.
1	Hex Nut	8-0362	2
2	Cover	7-0098	1
3	Set Screw	27-4280	1
4	Adjusting Insert- Brass	8-0363	1
5	Adjustment Nut	8-0364	1
6	Set Screw	8-0365	1
7	Glide Ring	8-0366	1
8	Spring	49-0104	1
9	Hex Nut	8-0367	1
10	Bushing	8-0368	1
11	Unloader Body	8-0369	1
12	Retainer	8-0269	1
13	Valve Housing	8-0104	1
14	Spring	49-0023	1
15	Valve	8-0105	1
16	O-ring	25-0036	1
17	Cylinder Pin	8-0372	1
18	Piston Repair Kit	70-0243	1
19	Spacer	8-0371	1
20	Stop Nut	8-0157	1
21	Washer	29-0154	2
	Check Valve Repair Kit (Includes 13-16)	70-0244	
	Unloader Complete	850-0252	

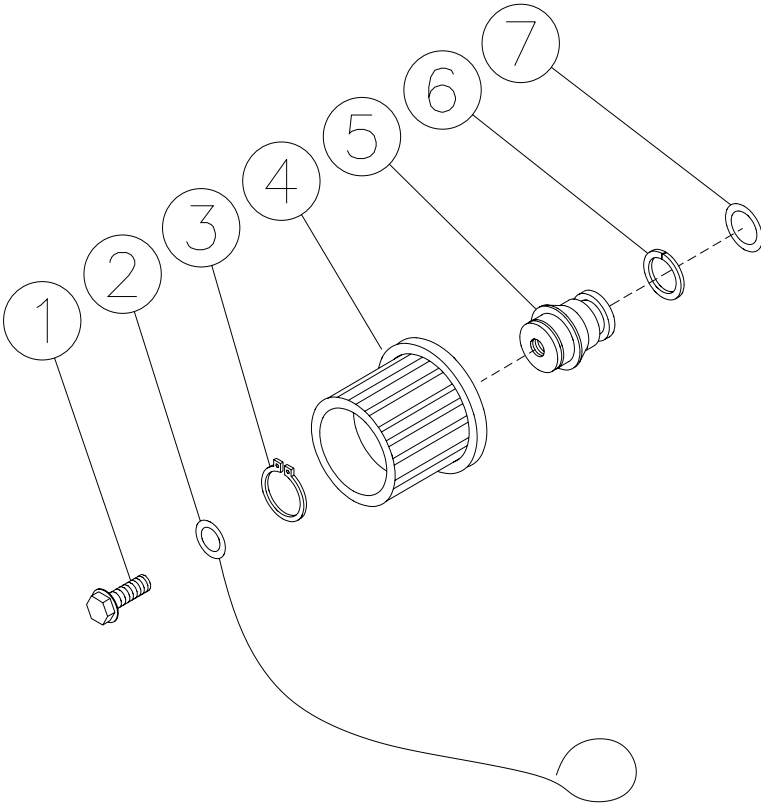
PRESSURE SWITCH (22-0243)



22-0243-120799-BAR

PRESSURE SWITCH (22-0243)			
REF. #	DESCRIPTION	PART #	QTY.
1	Pressure Switch	22-0243	1
2	Screw	N/A	4
3	Cover	N/A	1
4	O-ring (See 70-0306)	N/A Sep.	1
5	Micro Switch	N/A	1
6	Retainer Clip	N/A	1
7	Body	N/A	1
8	O-ring (See 70-0306)	N/A Sep.	2
9	Back-up Ring (See 70-0306)	N/A Sep.	1
10	Piston	N/A	1
11	Washer	N/A	1
12	Spring	49-0145	1
13	Washer	N/A	1
14	Plastic Housing	N/A	1
15	O-ring (See 70-0306)	N/A Sep.	1
16	Nut	N/A	1
17	Wire Assembly	N/A	1
	O-ring Repair Kit (Inc. 4, 8, 9, 15)	70-0306	

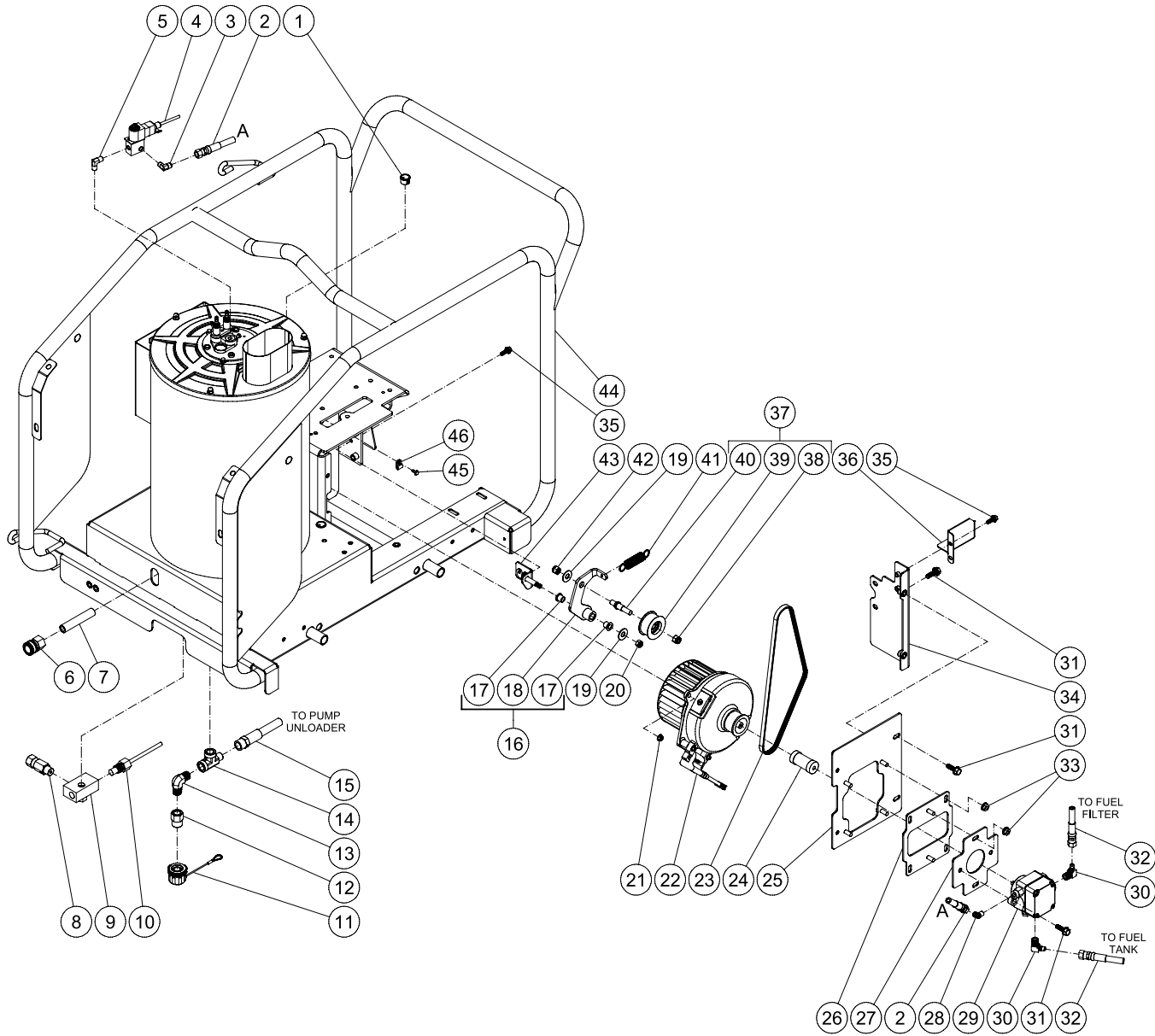
COIL DRAIN PLUG (850-0218)



850-0218-041597-BAR

COIL DRAIN PLUG (850-0218)			
REF. #	DESCRIPTION	PART #	QTY.
1	Bolt	27-9526	1
2	Retaining Cable	33-0260	1
3	Snap Ring	33-0261	1
4	Hand Wheel	16-0239	1
5	Plug	24-0147	1
6	Back-up Ring	25-0424	1
7	O-ring	25-0423	1

HEAT EXCHANGER/EMF SYSTEM

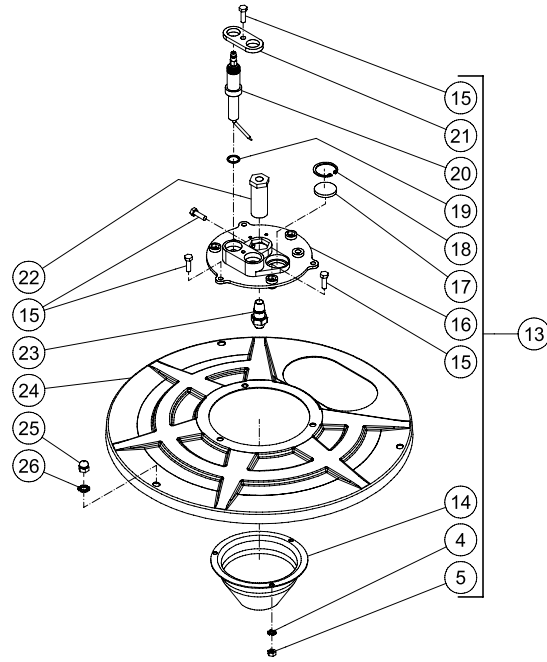
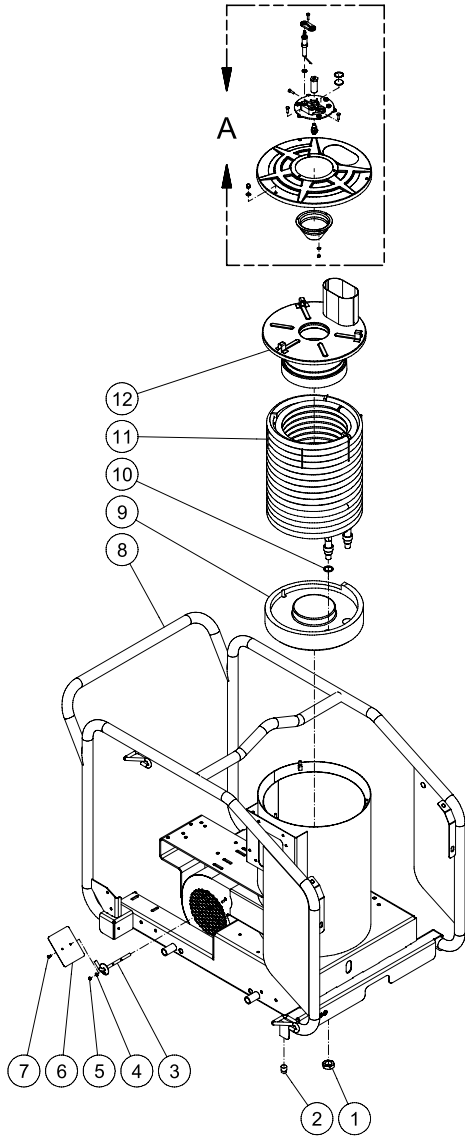


SMALL - HEAT EXCHANGER_EMF SYSTEM 051214 CH

HEAT EXCHANGER/EMF SYSTEM

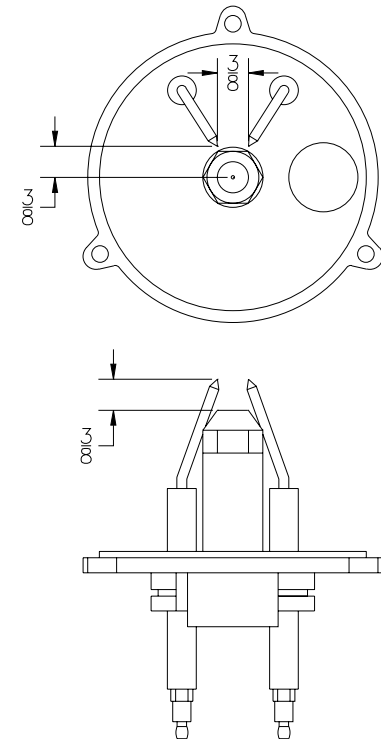
ITEM	DESCRIPTION	PART #	QTY	ITEM	DESCRIPTION	PART #	QTY
1	CORD BUSHING	32-0465	2	24	COUPLING	33-0225	1
2	FUEL HOSE	15-0333	1	25	FUEL PUMP MOUNTING PLATE	20-1296A01	1
3	ELBOW	23-0287	1	26	PLATE/FUEL PUMP	20-1297A01	1
4	FUEL SOLENOID	44-0098	1	27	PLATE/FUEL PUMP	20-1298A01	1
5	ELBOW	23-0249	1	28	ELBOW	23-0288	1
6	QC SOCKET	17-0004	1	29	FUEL PUMP	3-0020	1
7	PIPE NIPPLE	24-0165	1	30	ELBOW	23-0237	2
8	PRESSURE RELIEF VALVE	22-0272	1	31	BOLT	27-1201	8
9	OUTLET CONNECTOR	24-0138	1	32	FUEL HOSE	15-0147	2
10	HI LIMIT SWITCH	32-0798	1	33	NUT	30-3023	6
11	DRAIN PLUG ASSEMBLY	850-0218	1	34	BELTGUARD SIDE	20-1295A01	1
12	ADAPTER	23-0279	1	35	BOLT	27-1200	4
13	ELBOW	24-0131	1	36	SPRING COVER	20-1338A01	1
14	STREET TEE	23-0058	1	37	SHEAVE/SHAFT ASSEMBLY	850-0166	1
15	HIGH PRESSURE HOSE	15-0335	1	38	LOCKNUT	30-0159	1
16	IDLER ARM WITH BEARINGS	850-0421	1	39	SHEAVE ASSEMBLY	850-0177	1
17	BRONZE SLEEVE BEARING	48-0101	2	40	IDLER SHAFT	33-0212	1
18	IDLER ARM	20-1383A53	1	41	SPRING	49-0169	1
19	WASHER	28-0023	2	42	LOCKNUT	30-0159	1
20	LOCKNUT	30-0157	1	43	IDLER MOUNTING BRACKET	20-1382A53	1
21	NUT	30-3022	2	44	BOILER ASSEMBLY	N/A	1
22	EMF ASSEMBLY - SMALL	850-0405	1	45	BOLT	27-3062	1
23	BELT	11-0094	1	46	CLAMP	32-0428	1

BOILER ASSEMBLY



DETAIL A

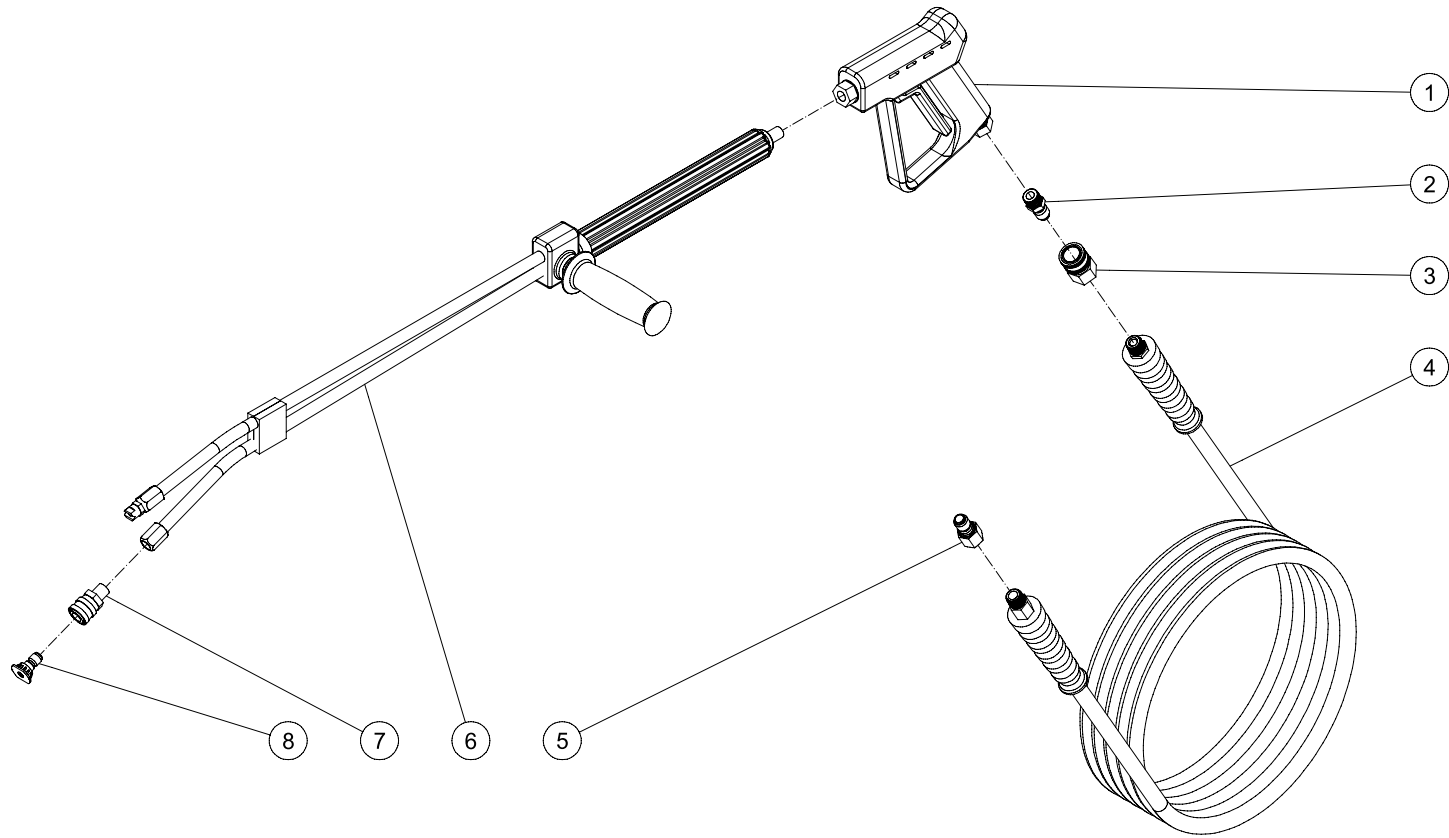
ELECTRODE GAP SETTINGS



SMALL BOILER ASSY 110512 CH

SMALL BOILER ASSEMBLY 110512 CH			
BOILER ASSEMBLY			
ITEM	DESCRIPTION	PART #	QTY
1	NUT	30-0121	2
2	PLUG	24-0034	1
3	AIR DIVERTER STEM	20-0377A01	1
4	STAR WASHER	28-1009	4
5	NUT	30-6001	4
6	AIR DIVERTER	20-0378A01	1
7	BOLT	27-8879	2
8	FRAME	5-0325A01	1
9	INSULATION	33-0267	1
10	WASHER	28-0521	2
11	HEAT EXCHANGER COIL	66-0009	1
12	EXHAUST CHIMNEY	20-1264	1
13	ELECTRODE ASSEMBLY (INC 5, 14-21)	850-0411	1
14	CONE	20-0373	1
15	BOLT	27-8878	8
16	ELECTRODE PLATE	38-0065	1
17	SIGHT GLASS	33-0252	1
18	SNAP RING	33-0254	1
19	WASHER	28-0523	2
20	ELECTRODE	32-0987	2
21	ELECTRODE BRACKET	20-1094A01	1
22	FUEL NOZZLE HOLDER	23-0292	1
23	FUEL NOZZLE	18-0310	1
24	TOP PAN	20-1263	1
25	ACORN NUT	30-6002	3
26	LOCKWASHER	28-1028	3

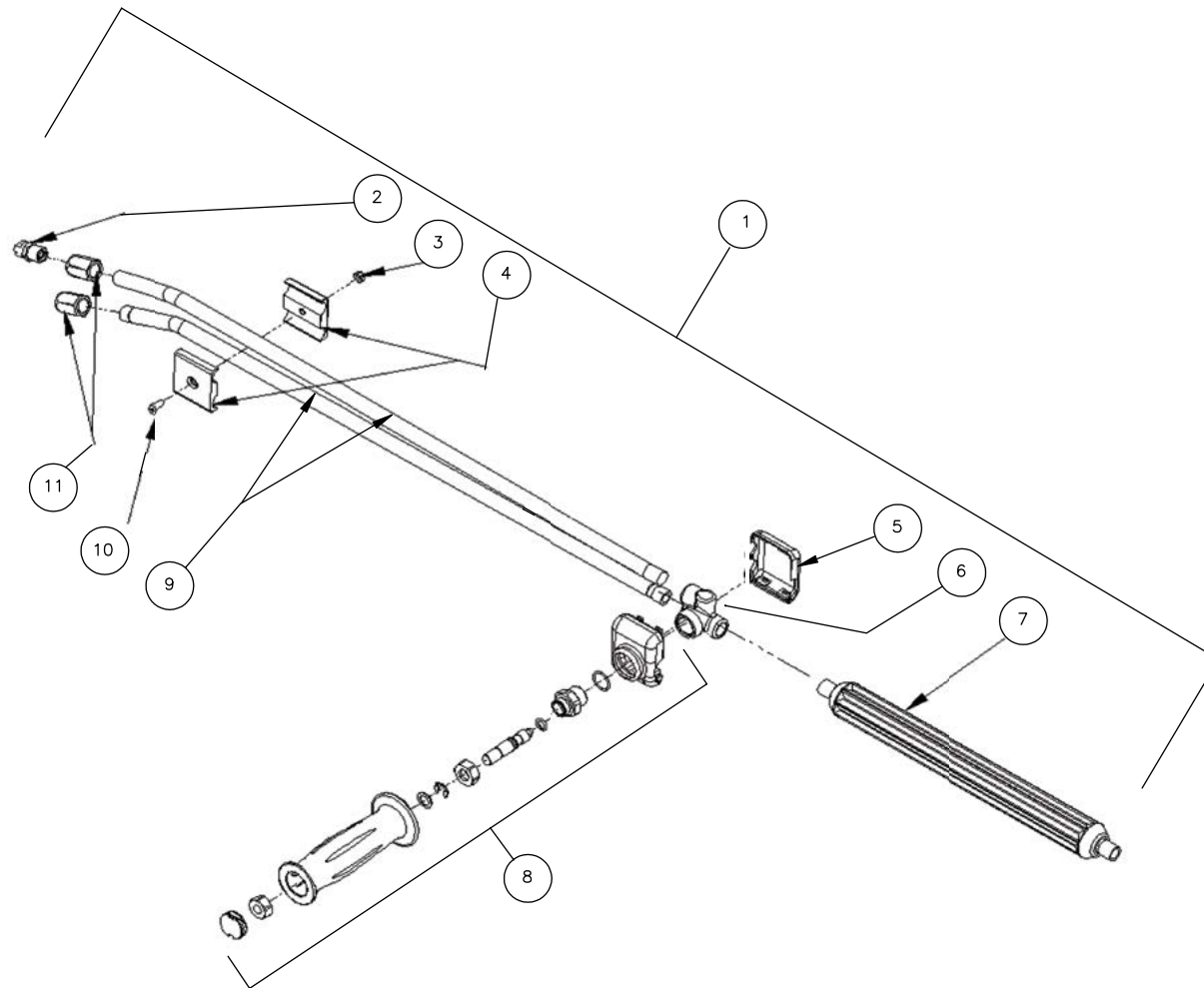
GUN WAND/HOSE ASSEMBLY



SMALL GUN/WAND HOSE ASSY 010212 CH

SMALL-GUN-WAND-HOSE ASSY 110512 CH			
GUN / WAND / HOSE ASSEMBLY			
ITEM	DESCRIPTION	PART #	QTY
1	GUN	16-0001	1
2	QUICK CONNECT	17-0005	1
3	QC SOCKET	17-0004	1
4	HOSE	15-0146	1
5	QUICK CONNECT	17-0006	1
6	DUAL LANCE	16-0416	1
7	QC SOCKET	17-0028	1
8	NOZZLE 00030	18-0387	1
-	NOZZLE 15030	18-0388	1
-	NOZZLE 25030	18-0390	1
-	NOZZLE 40030	18-0391	1

DUAL LANCE ASSEMBLY (16-0416)

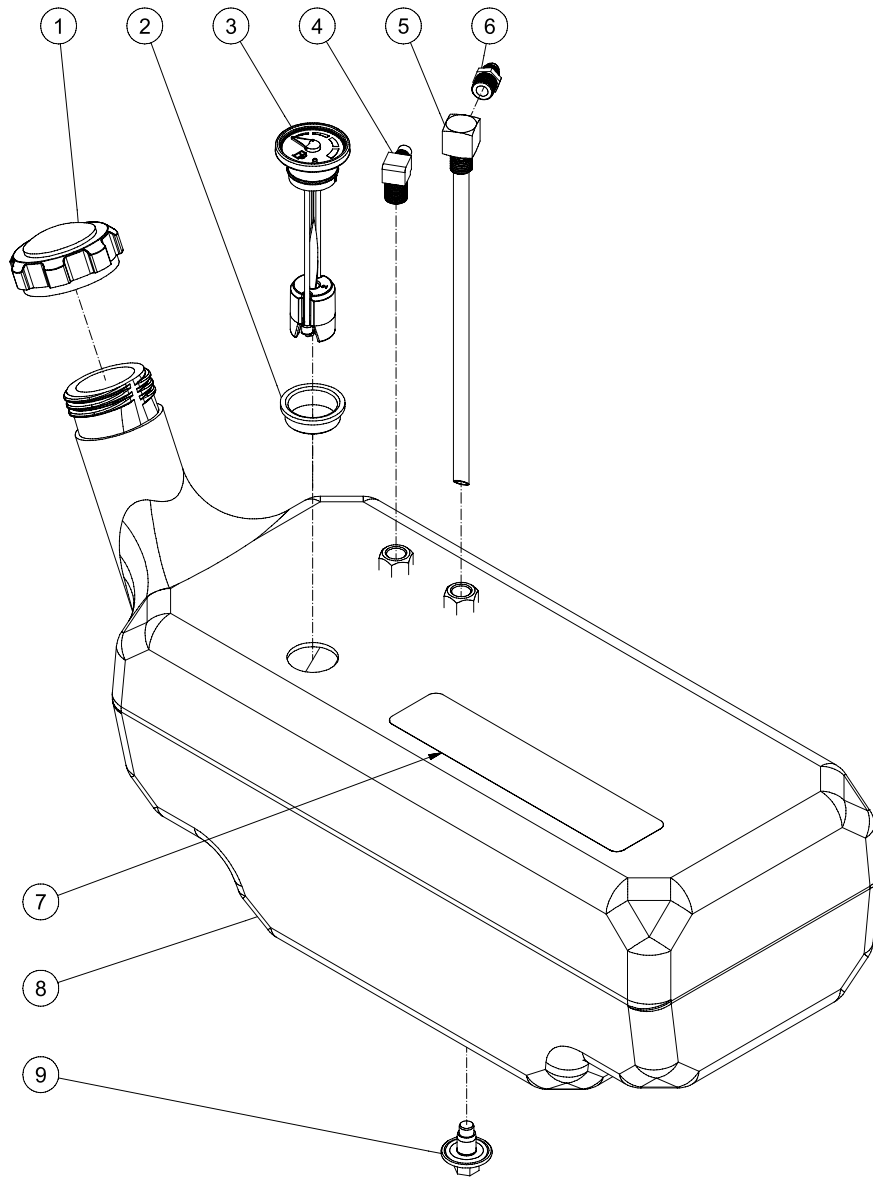


16-0416_16-0417-102405-RZ

16-0416-102405-RZ

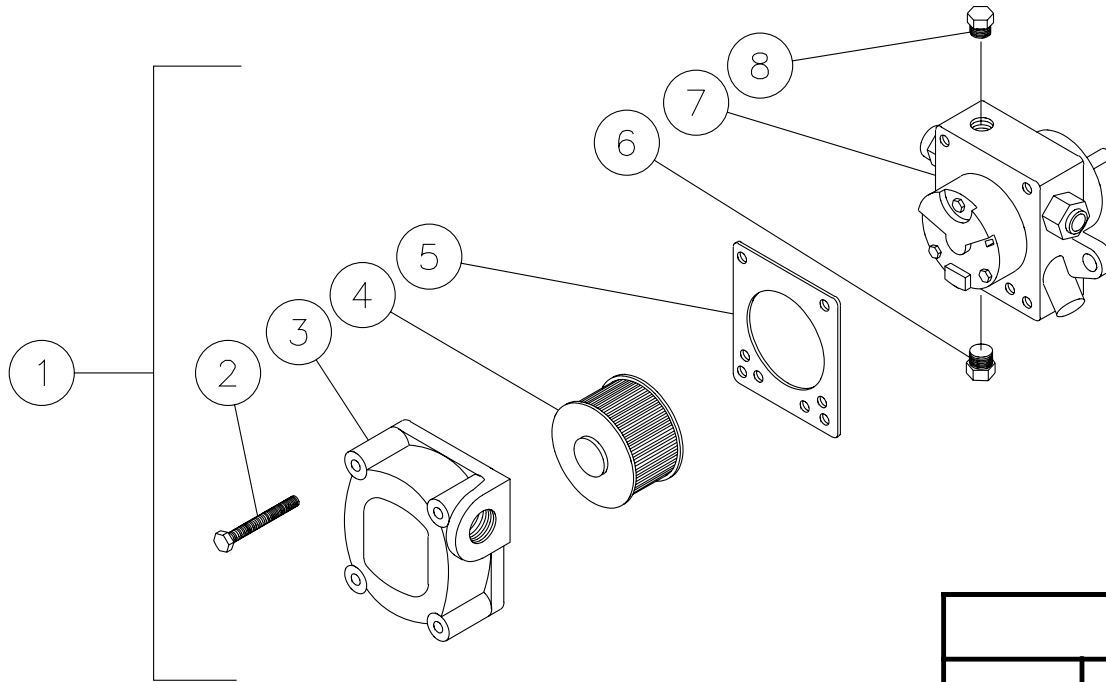
DUAL LANCE ASSEMBLY (16-0416)			
REF. #	DESCRIPTION	PART #	QTY.
1	Dual Lance Assembly - 36" (Inc. 2-11)	16-0416	1
2	Detergent Nozzle	18-0110	1
3	Nut	30-6001	1
4	Clamp	16-0420	2
5	Lower Valve Cover (See 16-0416)	N/A Sep.	1
6	Housing (See 16-0416)	N/A Sep.	1
7	Lance	16-0419	1
8	Handle Repair Kit	70-0419	1
9	Lance (See 16-0416)	N/A Sep.	2
10	Screw	27-8196	1
11	Nozzle Adapter	24-0280	2

FUEL TANK



GPH FUEL TANK ASSY 012313 CH			
FUEL TANK ASSEMBLY			
ITEM	DESCRIPTION	PART #	QTY
1	FUEL CAP	12-0033	1
2	FUEL GAUGE GROMMET	33-0255	1
3	FUEL GAUGE	22-0475	1
4	ELBOW	23-0237	1
5	FUEL PICK UP	33-0296	1
6	NIPPLE	23-0247	1
7	DECAL - CAUTION: RISK OF FIRE (SEE 71-0009)	N/A	1
8	FUEL TANK	12-0242	1
9	DRAIN PLUG	68-3204	1

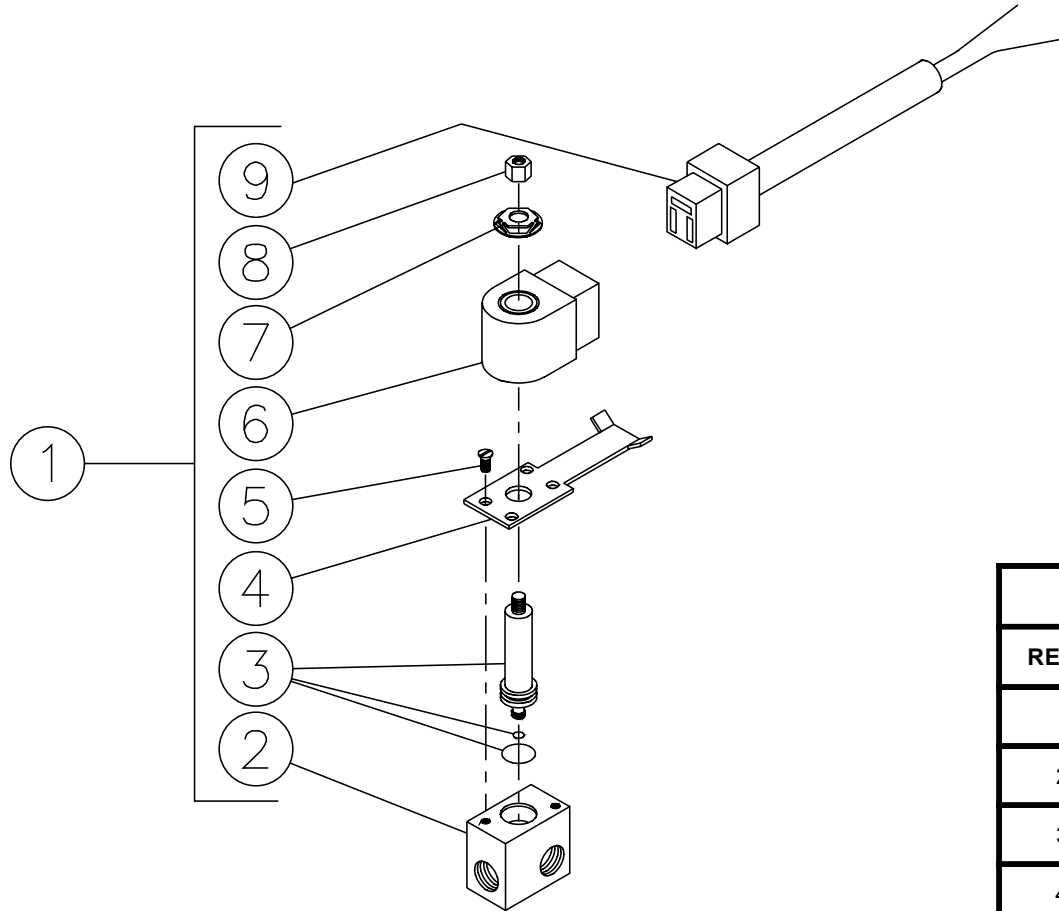
FUEL PUMP (3-0020)



HSP018-3-0020-041597-BAR

FUEL PUMP (3-0020)			
REF. #	DESCRIPTION	PART #	QTY.
1	Fuel Pump Complete-Right Hand	3-0020	1
2	Cover Screw	46-1006	4
3	Cover-Right Hand	46-1005	1
4	Strainer	19-0034	1
5	Cover Gasket	26-0109	1
6	Plug	24-0044	2
7	Body	N/A	1
8	Plug	24-0082	1

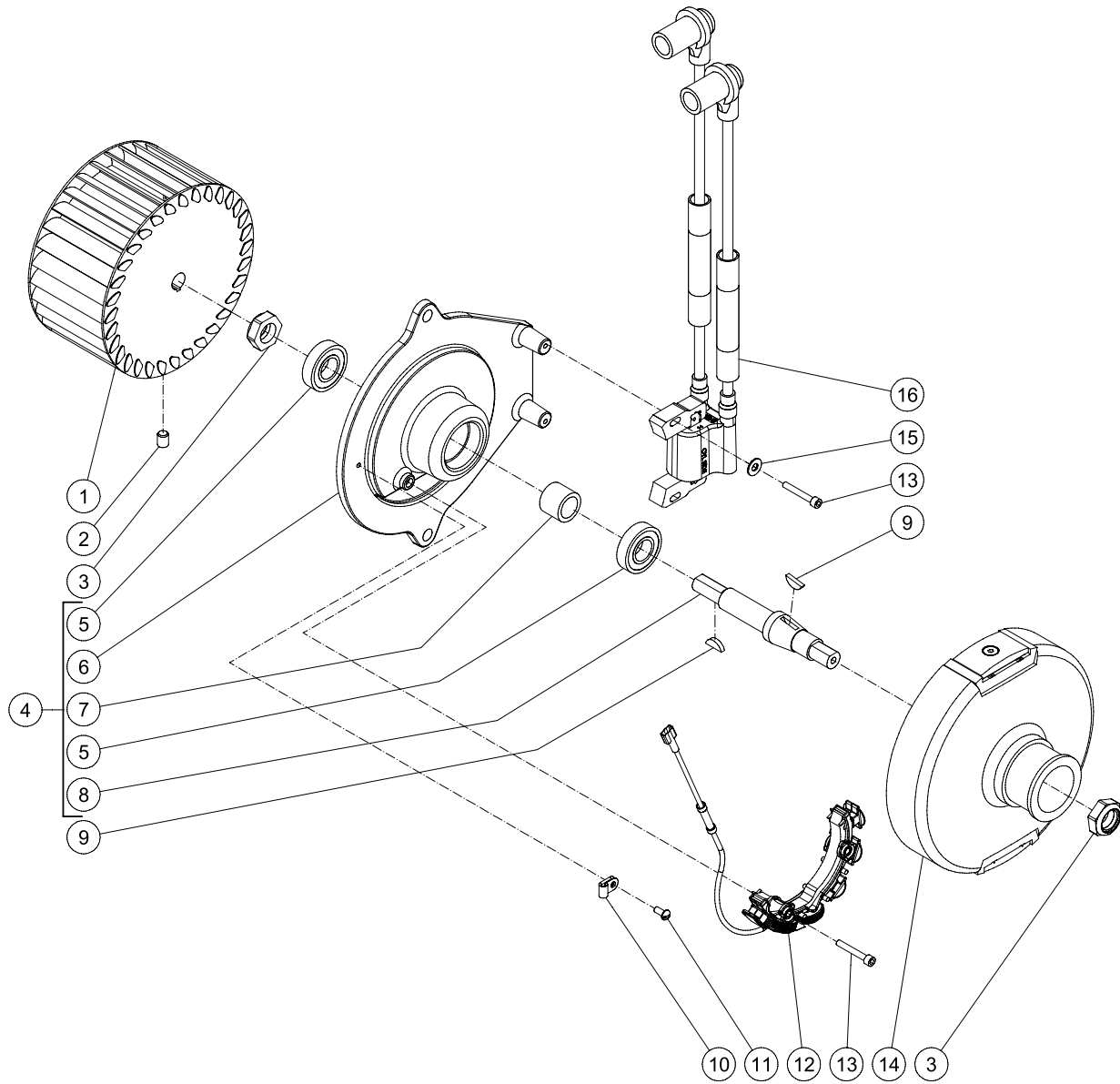
FUEL SOLENOID (44-0098)



HSP013-44-0098-121698-BAR

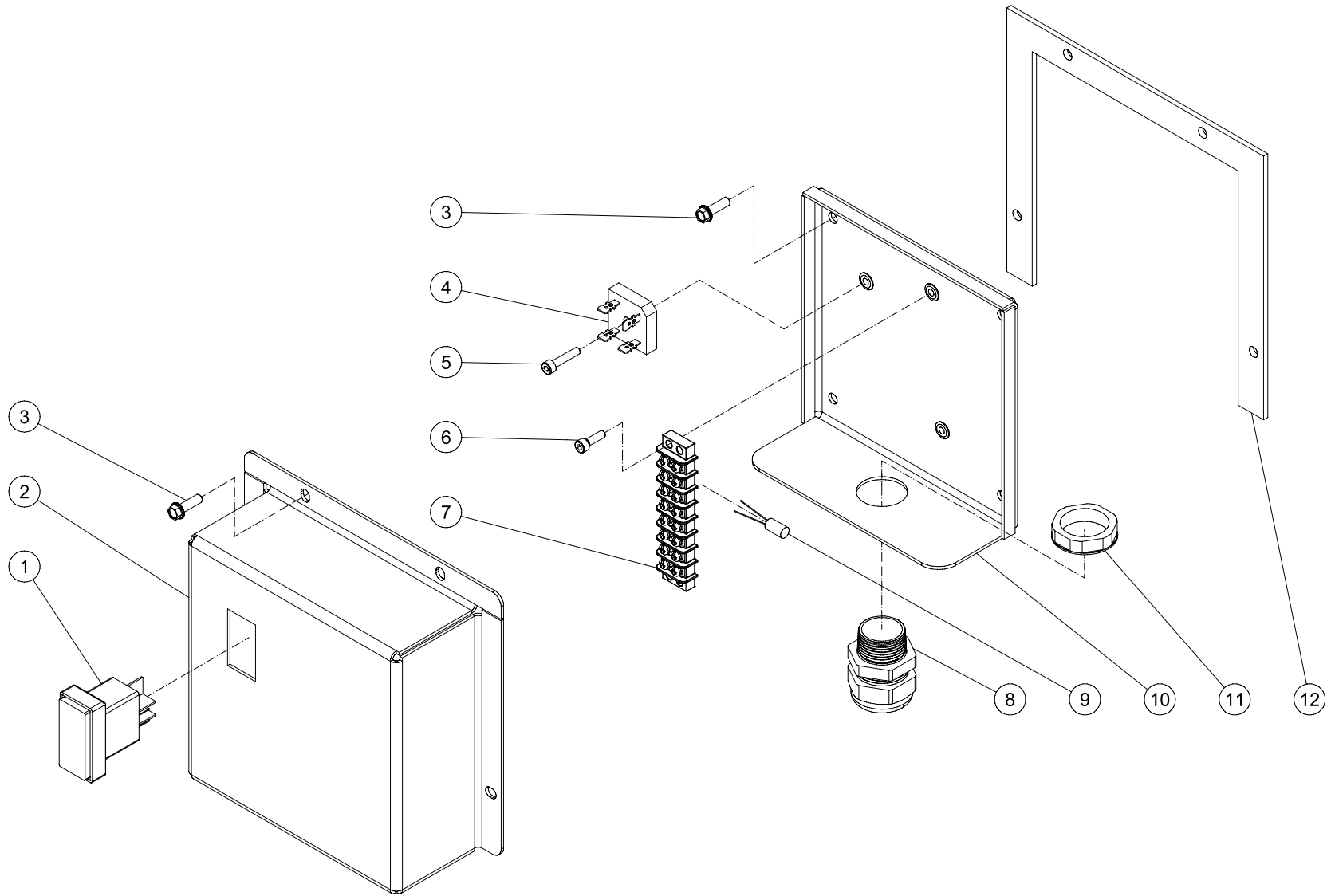
FUEL SOLENOID (44-0098)			
REF. #	DESCRIPTION	PART #	QTY.
1	Solenoid Complete-12V	44-0098	1
2	Solenoid Body	46-1013	1
3	Solenoid Piston	46-1012	1
4	Solenoid Base	46-1014	1
5	Screw (See 44-0098)	N/A Sep.	2
6	Solenoid Coil-12V	46-1015	1
7	Spring (See 44-0098)	N/A Sep.	1
8	Piston Nut	46-1016	1
9	Din Connector Cord	32-0443	1

EMF SYSTEM (850-0403)



850-0403 031113 CH			
EMF SYSTEM			
ITEM	DESCRIPTION	PART #	QTY
-	EMF ASSEMBLY	850-0403	1
1	BLOWER FAN	44-0099	1
2	SET SCREW	30-3021	1
3	LOCKNUT	30-0177	2
4	BLOWER FLANGE ASSEMBLY	850-0402	1
5	SEALED BEARING	48-0041	2
6	BLOWER FLANGE	38-0066	1
7	SPACER	33-0206	1
8	BLOWER SHAFT	20-0347	1
9	WOODRUFF KEY	43-0080	2
10	CLAMP	32-0403	1
11	SCREW	27-2070	1
12	STATOR ASSEMBLY	850-0401	1
13	BOLT	27-0740	4
14	HUB	38-0041	1
15	WASHER	28-0001	2
16	IGNITION ASSEMBLY	850-0413	1

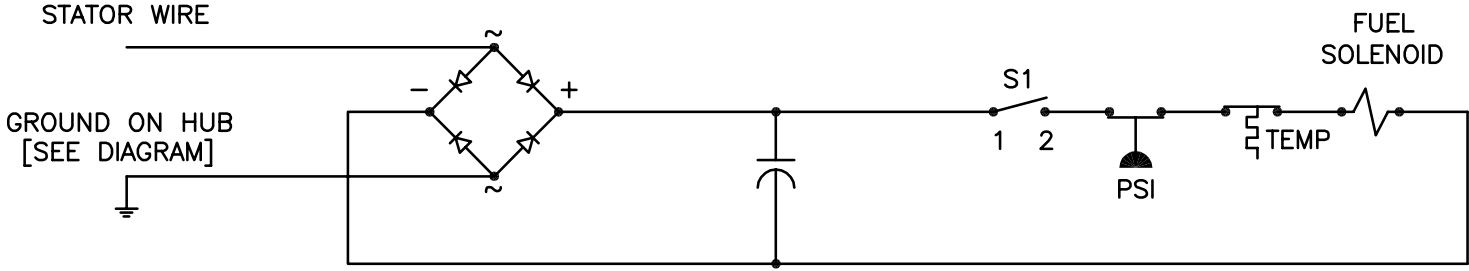
ELECTRIC BOX ASSEMBLY



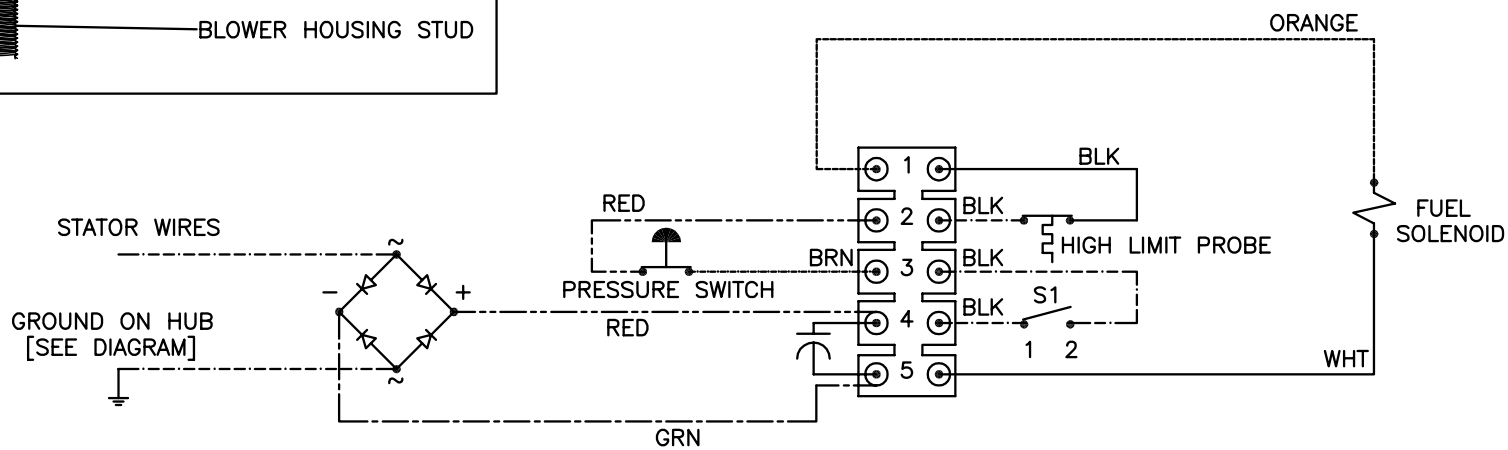
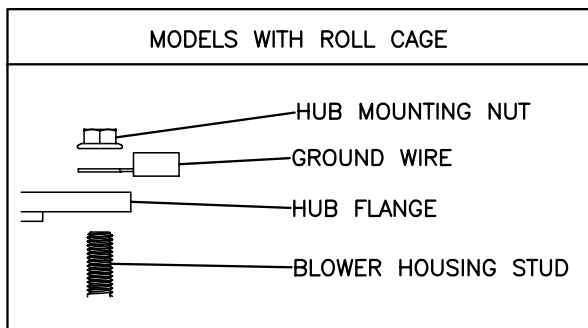
SMALL - E-BOX ASSY 051214 CH

SMALL E BOX ASSY 051214 CH			
ELECTRIC BOX ASSEMBLY			
ITEM	DESCRIPTION	PART #	QTY
1	ROCKER SWITCH	32-0626	1
2	ELECTRIC BOX COVER	20-1302A01	1
3	BOLT	27-9526	8
4	BRIDGE RECTIFIER	32-1114	1
5	BOLT	27-8930	1
6	SCREW	27-8835	2
7	TERMINAL STRIP	32-0436	1
8	CORD RELIEF	9-0046	1
9	CAPACITOR	32-1113	1
10	ELECTRIC BOX BACK	20-1301A01	1
11	ELECTRICAL LOCKNUT	32-0292	1
12	GASKET	26-0384	1

WIRING SCHEMATIC



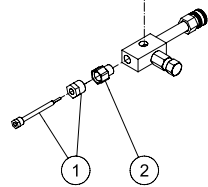
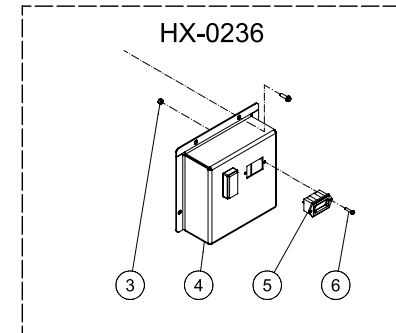
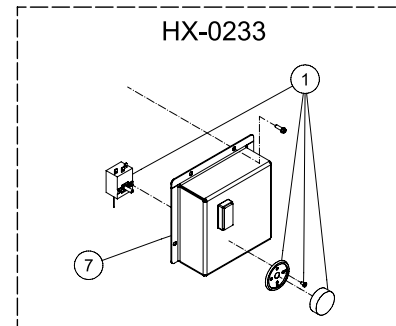
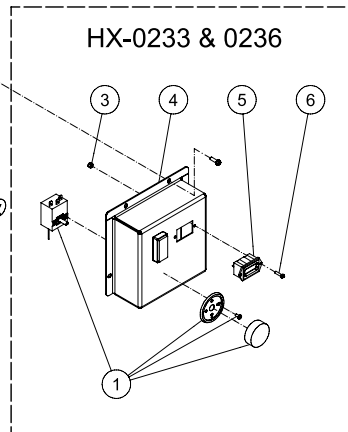
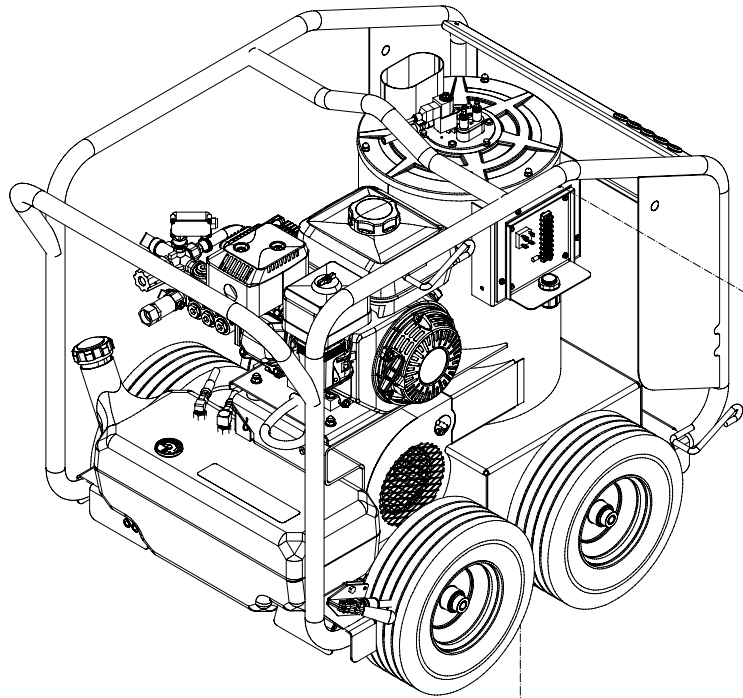
WIRING DIAGRAM



ACCESSORIES

OPTIONS	DESCRIPTION
HX-0233	ADJUSTABLE THERMOSTAT
HX-0236	HOUR METER

OPTION- ADJUSTABLE THERMOSTAT AND HOUR METER



SMALL ADJ THERM_HR METER 011813 CH			
OPTION- ADJUSTABLE THERMOSTAT AND HOUR METER			
ITEM	DESCRIPTION	PART #	QTY
1	ADJUSTABLE THERMOSTAT	32-0962	1
2	REDUCER	23-0243	1
3	LOCKNUT	30-0152	2
4	ELECTRIC BOX COVER	20-1318A01	1
5	HOUR METER	32-0668	1
6	SCREW	27-8881	2
7	ELECTRIC BOX COVER	20-1302A01	1

